

Figure 8-5. Compressor oil filter group

FIG. & INDEX NO.	PART NUMBER	DESCRIPTION							UNITS PER ASSY	USABLE ON CODE
		1	2	3	4	5	6	7		
8-5-	No Number	OIL FILTER GROUP, Compressor (see figure 8-1-39 for NHA)							REF	
-1	81150	. HOSE ASSEMBLY, Oil filter							1	
-2	81448	. ELBOW, J.I.C., 45°, 1-1/2 NPT							1	
-3	37919	. ELBOW, J.I.C., 90°, 1-1/2 NPT							1	
-4	61546	. ADAPTER, Oil filter							1	
-5	122145	. SCREW, Cap, hex hd, 3/8 - 16 NC x 1-1/4 in. lg (AP)							2	
-6	120382	. WASHER, Lock, split, 3/8 in. (AP)							2	
-7	11044	. GASKET, Adapter							1	
	61446	. FILTER ASSEMBLY, Oil							1	
-8	265241-1500-1	. . HOUSING, Oil filter (92863)							1	
-9	122307	. . SCREW, Cap, hex hd, 7/16 - 14 NC x 2 in. lg (AP)							4	
-10	120395	. . WASHER, Flat, 7/16 in. (AP)							4	
-11	143934	. . PLUG, Pipe, sq hd, 3/8 NPT							1	
-12	61150	. . ELEMENT, Filter							1	
-13	62877	. . SEAL, Housing							1	
-14	64524	. . HEAD ASSEMBLY, Oil filter							1	
-15	81351	. . ADAPTER, Port							2	
-16	9421707	. . SCREW, Cap, hex soc hd, 5/16 - 18 NC x 1 in. lg (AP)							8	
-17	81352	. . SEAL, Adapter							2	
-18	63301	. DECAL, Oil filter							1	

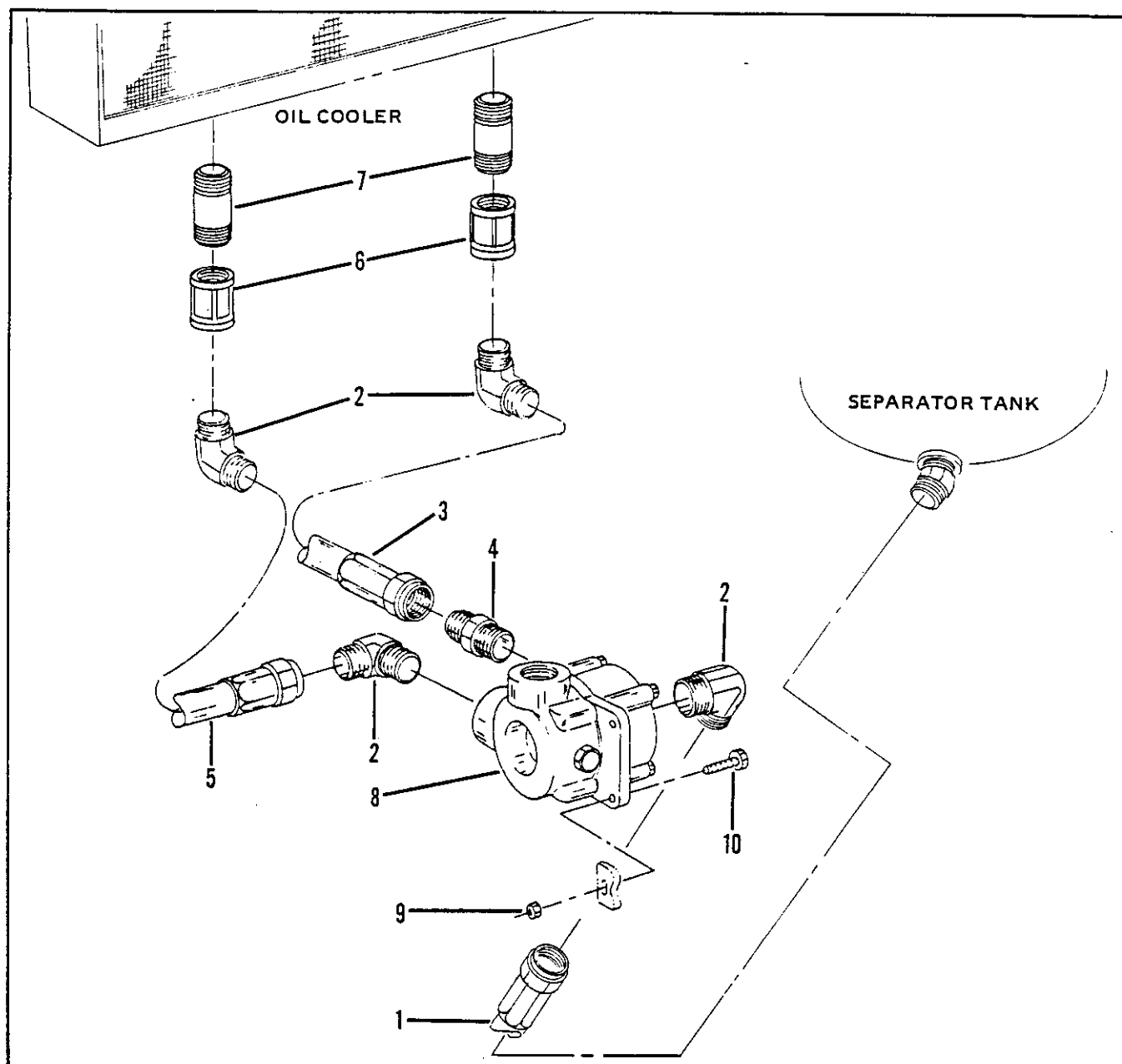


Figure 8-6. Thermal bypass valve group

FIG. & INDEX NO.	PART NUMBER	DESCRIPTION	UNITS PER ASSY	USABLE ON CODE
		1 2 3 4 5 6 7		
8-6-	No Number	THERMAL BYPASS VALVE GROUP (See figure 8-1-40 for NHA)	REF	
-1	81151	. HOSE ASSEMBLY, Oil, separator to thermal bypass valve	1	
-2	37919	. ELBOW, J.I.C., 90°, 1-1/2 NPT	4	
-3	81153	. HOSE ASSEMBLY, Oil, thermal bypass valve to cooler	1	
-4	23346	. CONNECTOR, J.I.C., 1-1/2 NPT	1	
-5	81152	. HOSE ASSEMBLY, Oil, cooler to thermal bypass valve	1	
-6	179742	. COUPLING, Pipe, 1-1/2 NPT	2	
-7	219823	. NIPPLE, Pipe, 1-1/2 NPT x 3 in. lg	2	
-8	62450	. VALVE ASSEMBLY, Thermal bypass (see figure 8-7)	1	
-9	443339	. LOCKNUT, Hex, 1/2 - 13 NC (AP)	2	
-10	122459	. SCREW, Cap, hex hd, 1/2 - 13 NC x 2 in. lg (AP)	2	

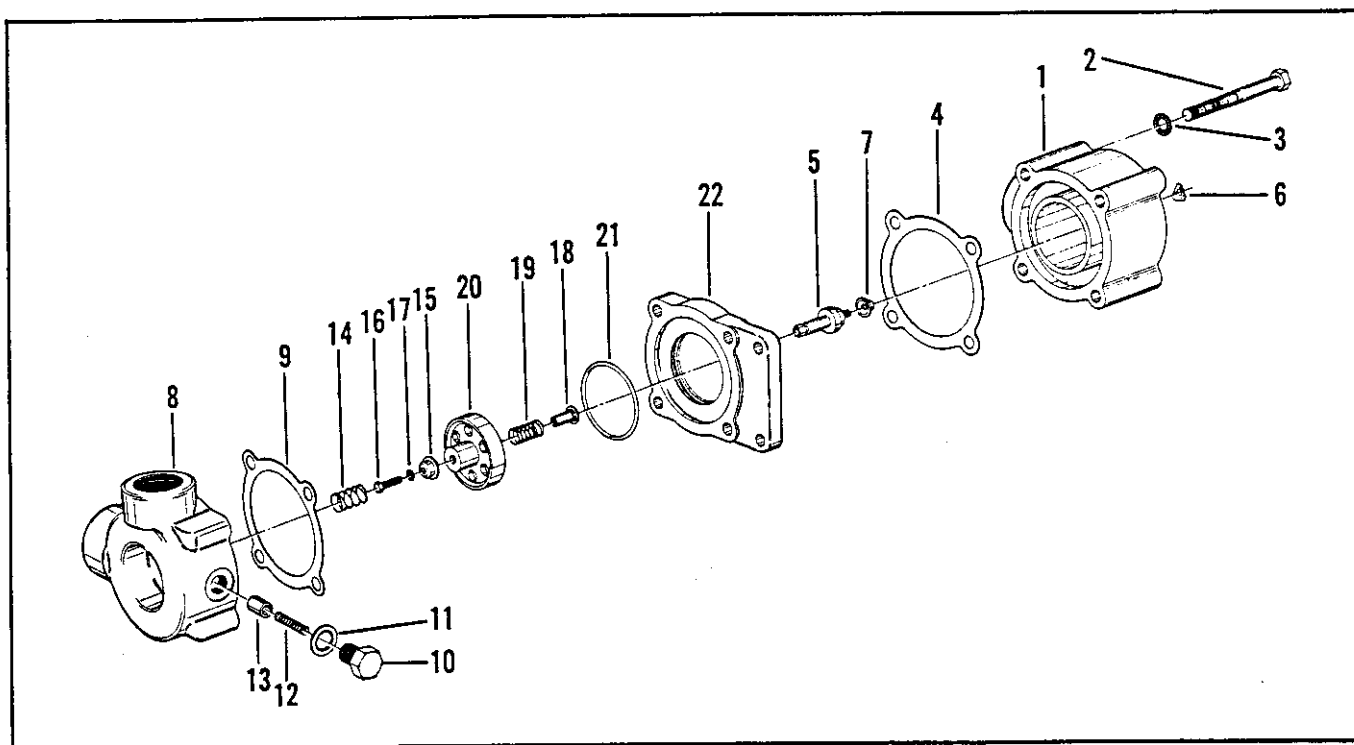


Figure 8-7. Thermal bypass valve assembly

FIG. & INDEX NO.	PART NUMBER	DESCRIPTION	UNITS PER ASSY	USABLE ON CODE
		1 2 3 4 5 6 7		
8-7-	62450	VALVE ASSEMBLY, Thermal bypass (see figure 8-6-8 for NHA)	REF	
-1	48792	. COVER, Inlet	1	
-2	111300	. SCREW, Cap, hex hd, 1/2 - 13 NC x 4-1/2 in. lg (AP)	4	
-3	28145	. WASHER, Lock, internal tooth, 1/2 in. (AP)	4	
-4	48795	. GASKET, Cover	1	
-5	40434	. ELEMENT ASSEMBLY, Power	1	
-6	5300-1/4-28	. NUT, Spring plate, 1/4 - 28 NF (AP) (79136) (Davey PN 49275)	1	
-7	61211	. BUSHING, Element	1	
-8	62445	. COVER, Outlet	1	
-9	48795	. GASKET, Cover	1	
-10	62442	. BODY, Relief valve	1	
-11	110-3-4	. WASHER, Sealing (86579) (Davey PN 26826)	1	
-12	62444	. SPRING, Relief valve	1	
-13	62443	. SEAT, Relief valve	1	
-14	40679	. SPRING	1	
-15	46174	. GUIDE, Spring	1	
-16	121900	. SCREW, Cap, hex hd, 1/4 - 20 NC x 1 in. lg (AP)	1	
-17	28149	. WASHER, Lock, internal tooth, 1/4 in. (AP)	1	
-18	46175	. PLUNGER	1	
-19	40678	. SPRING	1	
-20	48796	. SHUTTLE	1	
-21	40696	. PACKING, Preformed, o-ring	1	
-22	48794	. BODY, Valve	1	

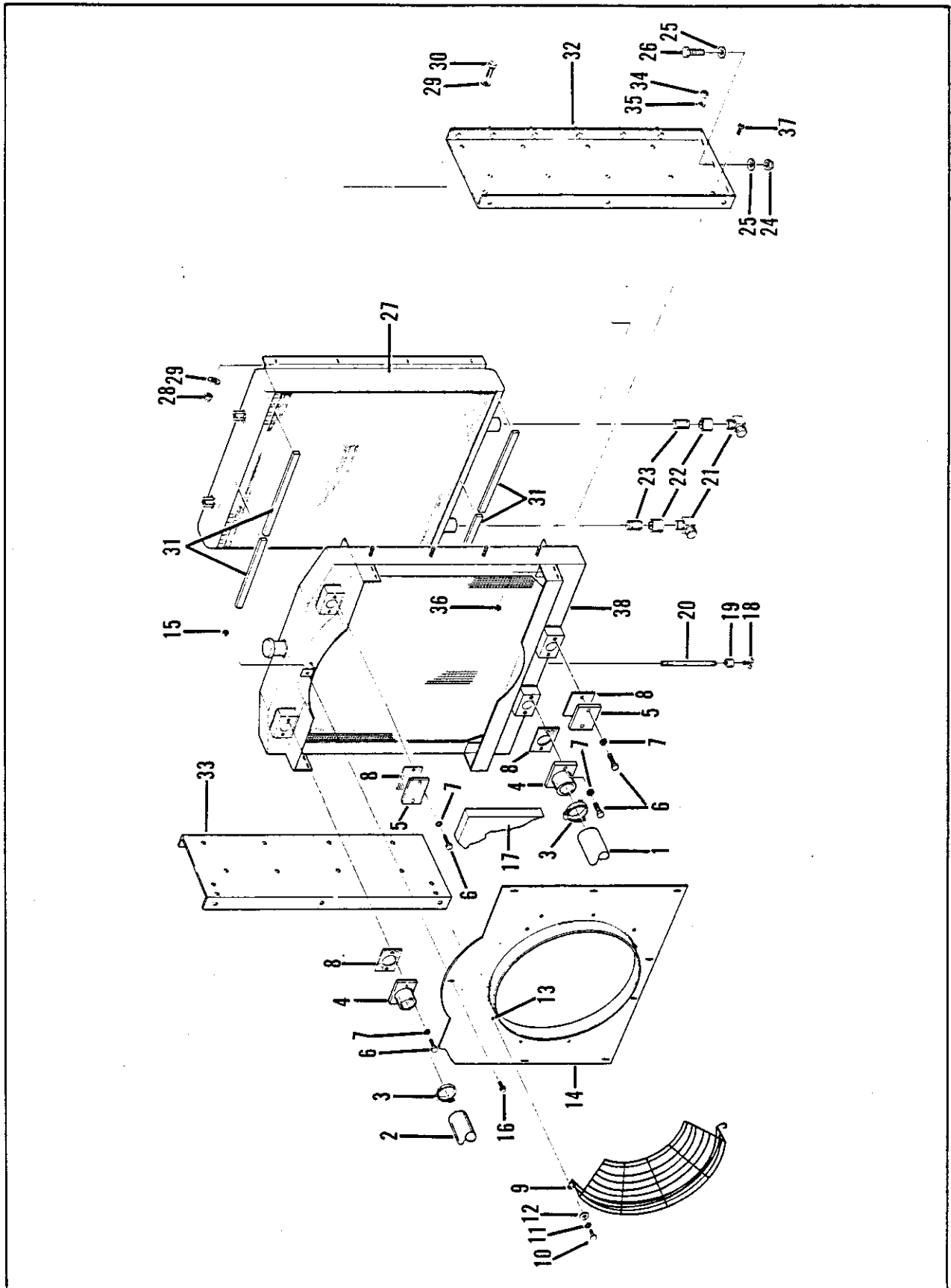


Figure 8-8. Radiator and cooler assembly

FIG. & INDEX NO.	PART NUMBER	DESCRIPTION	UNITS PER ASSY	USABLE ON CODE
		1 2 3 4 5 6 7		
8-8-	No Number	RADIATOR AND COOLER GROUP (See figure 8-1-41 for NHA)	REF	
-1	TYPE 4684CF	. HOSE, Radiator, lower, 19-1/2 in. lg (24161) (Davey 62994)	1	
-2	TYPE 4684CF	. HOSE, Radiator, upper, 27 in. lg (24161) (Davey 65126)	1	
-3	M44H	. CLAMP, Hose, radiator (AP) (08484) (Davey 61563)	8	
-4	61606	. FLANGE, Radiator hose	2	
-5	27926	. PLATE, Blank flange	2	
-6	122253	. SCREW, Cap, hex hd, 7/16 - 14 NC x 1 in. lg (AP)	8	
-7	120383	. WASHER, Lock, split, 7/16 in. (AP)	8	
-8	27460	. GASKET, Flange	4	
-9	61569	. GUARD, Fan	2	
-10	121940	. SCREW, Cap, hex hd, 1/4 - 20 NC x 1-3/4 in. lg (AP)	6	
-11	120380	. WASHER, Lock, split, 1/4 in. (AP)	6	
-12	120392	. WASHER, Flat, 1/4 in. (AP)	6	
-13	61728	. RIVNUT, 1/4 - 20 NC (AP)	6	
-14	81103	. SHROUD, Fan	1	
-15	9416918	. NUT, Lock, hex serr flg, 1/4 - 20 NC (AP)	9	
-16	274825	. SCREW, Hex serr wash hd, 1/4 - 20NC x 3/4 in. lg (AP)	9	
	63002	. WASHER, Flat, special	9	
-17	82559	. INSULATION, Fan shroud	2	
	009-479	. CLIP, Welding pin (AP) (84483) (Davey 80053)	13	
	009-131	. PIN, Welding (AP) (88483) (Davey 80052)	13	
-18	270	. DRAIN COCK, Radiator (79470) (Davey 14028)	1	
-19	144069	. COUPLING, Pipe, 3/8 NPT	1	
-20	219640	. NIPPLE, Pipe, 3/8 NPT x 10 in. lg	1	
-21	37919	. ELBOW, J.I.C., 90°, 1-1/2 NPT (see figure 8-6-2 for NHA)	REF	
-22	179742	. COUPLING, Pipe, 1-1/2 NPT (see figure 8-6-6 for NHA)	REF	
-23	219823	. NIPPLE, Pipe, 1-1/2 NPT x 3 in. lg (see figure 8-6-7 for NHA)	REF	
	80910	. RADIATOR AND COOLER ASSEMBLY	1	
-24	443339	. LOCKNUT, Hex, 1/2 - 13NC (AP)	6	
-25	120396	. WASHER, Flat, 1/2 in. (AP)	12	
-26	122459	. SCREW, Cap, hex hd, 1/2 - 13NC x 2 in. lg (AP)	6	
-27	80719	. COOLER, Oil	1	
-28	443335	. LOCKNUT, Hex, 3/8 - 16 NC (AP)	8	
-29	67921	. WASHER, Flat, S.A.E., 3/8 in. (AP)	16	
-30	122119	. SCREW, Cap, hex hd, 3/8 - 16NC x 3/4 in. lg (AP)	8	
-31	80608	. SPONGE STRIP	4	
-32	80732	. SUPPORT, Radiator-cooler, RH	1	
-33	80733	. SUPPORT, Radiator-cooler, LH	1	
-34	443335	. LOCKNUT, Hex, 3/8 - 16NC (AP)	8	
-35	67921	. WASHER, Flat, S.A.E., 3/8 in. (AP)	8	
-36	9416918	. NUT, Lock, hex serr flg, 1/4 - 20NC (AP)	8	
-37	274473	. SCREW, Hex serr wash hd, 1/4 - 20NC x 5/8 in. lg (AP)	8	
-38	80718	. RADIATOR ASSEMBLY	1	

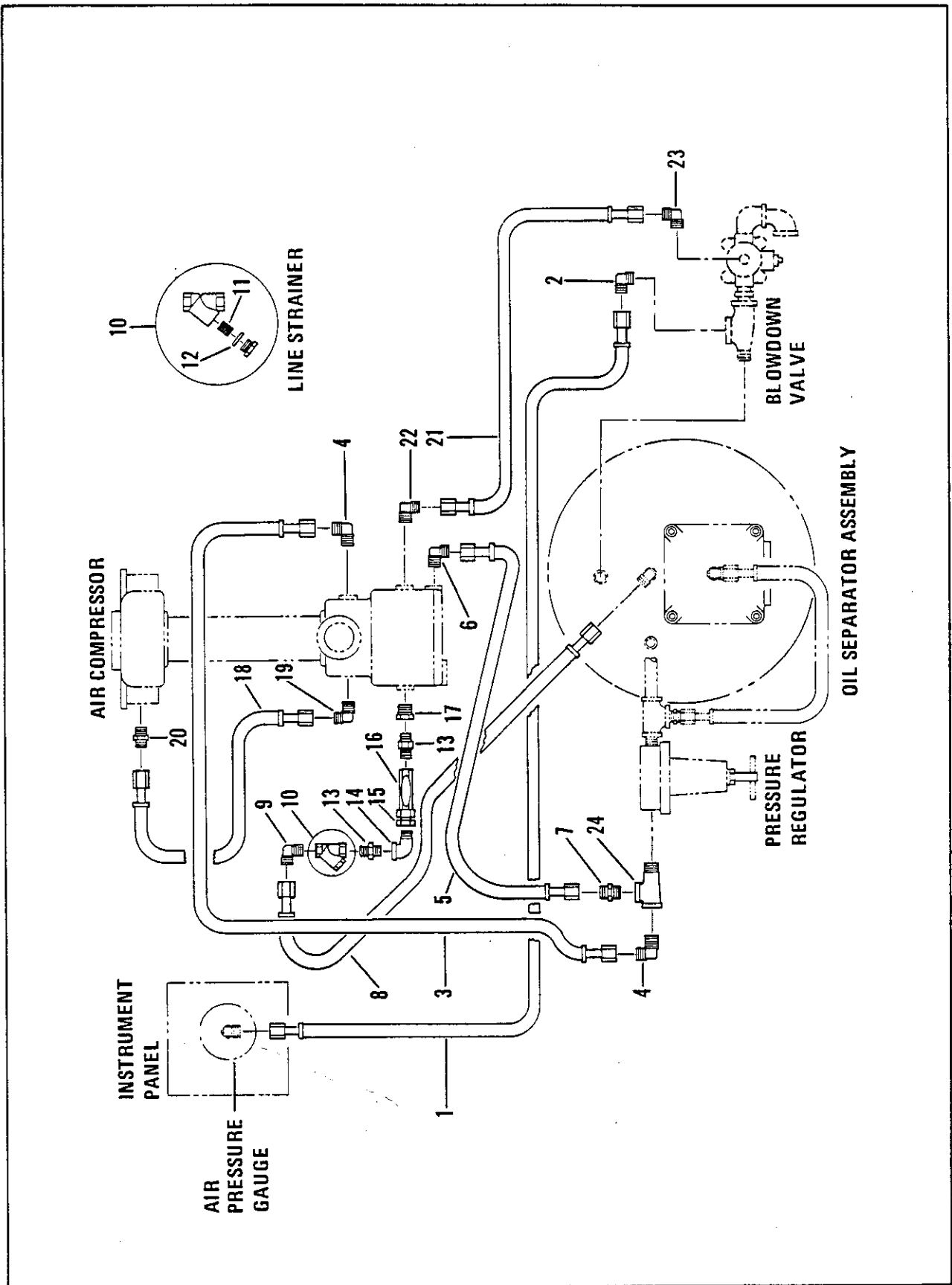


Figure 8-9. Air line system

FIG. & INDEX NO.	PART NUMBER	DESCRIPTION							UNITS PER ASSY	USABLE ON CODE
		1	2	3	4	5	6	7		
8-9	No Number	AIR LINE SYSTEM (See figure 8-1-43 for NHA)							REF	
-1	61148	. HOSE ASSY, Blowdown valve to pressure gauge							1	
-2	27691	. ELBOW, 1/2 NPT x 3/8 tube							1	
-3	81826	. HOSE ASSY, Regulator tee to intake body							1	
-4	28944	. ELBOW, 1/2 NPT x 1/2 tube							2	
-5	61087	. HOSE ASSY, Regulator tee to intake control							1	
-6	28890	. ELBOW, 1/4 NPT x 3/8 tube							1	
-7	29387	. CONNECTOR, 1/2 NPT x 3/8 tube							1	
-8	61078	. HOSE ASSY, Separator cover to line strainer							1	
-9	28890	. ELBOW, 1/4 NPT x 3/8 tube							1	
-10	47690	. STRAINER, Line							1	
-11	61119	. . ELEMENT, Screen							1	
-12	24963	. . PACKING, Preformed, o-ring							1	
-13	41545	. NIPPLE, Hex, brass, 1/4 NPT							2	
-14	144112	. ELBOW, Street, 90°, 1/4 NPT							1	
-15	49777	. ORIFICE, "Z"							1	
-16	62234	. GAUGE, Flow sight							1	
-17	144038	. BUSHING, Reducing, 1/2 x 1/4 NPT							1	
-18	61083	. HOSE ASSY, Intake body to end cover							1	
-19	28890	. ELBOW, 1/4 NPT x 3/8 tube							1	
-20	28888	. CONNECTOR, 1/4 NPT x 3/8 tube							1	
-21	61081	. HOSE ASSY, Intake control to blowdown valve							1	
-22	28890	. ELBOW, 1/4 NPT x 3/8 tube							1	
-23	41000	. ELBOW, 1/8 NPT x 3/8 tube							1	
-24	67742	. TEE, Street, 1/2 NPT							1	

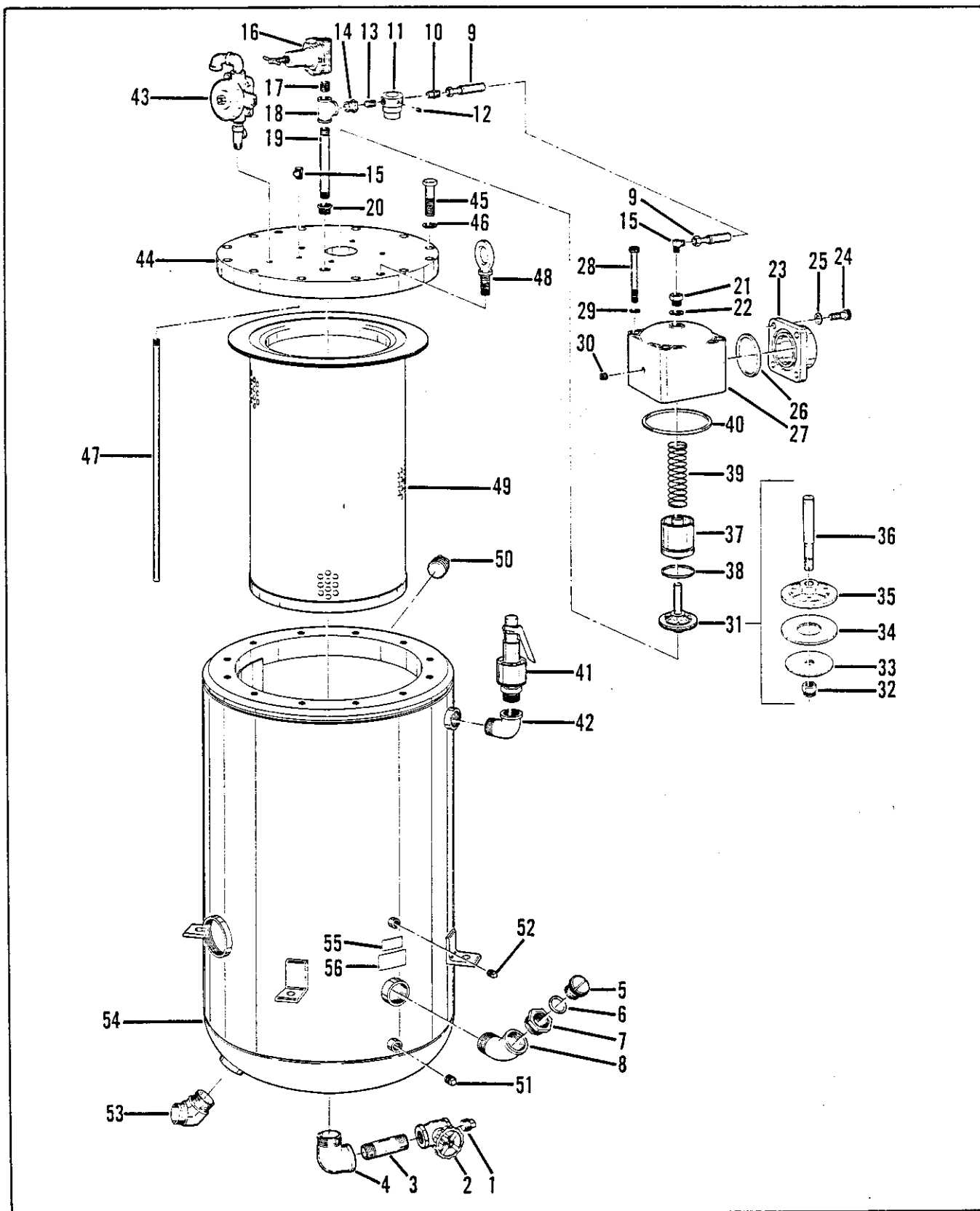


Figure 8-10. Oil separator group

FIG. & INDEX NO.	PART NUMBER	DESCRIPTION	UNITS PER ASSY	USABLE ON CODE
		1 2 3 4 5 6 7		
8-10-	No Number	OIL SEPARATOR GROUP (See figure 8-1-44 for NHA)	REF	
-1	143935	. PLUG, Pipe, sq hd, 1/2 NPT	1	
-2	14034	. VALVE, Drain	1	
-3	192077	. NIPPLE, Pipe, 1/2 NPT x 2-1/2 in. lg	1	
-4	127961	. ELBOW, Street, 90°, 1/2 NPT	1	
-5	26359	. PLUG, Oil filler	1	
-6	24982	. PACKING, Preformed, o-ring	1	
-7	63062	. ADAPTER, Filler plug	1	
-8	179446	. ELBOW, Street, 45°, 1-1/2 NPT	1	
	81869	. SEPARATOR ASSEMBLY, Oil	1	
-9	61072	. . HOSE ASSEMBLY	1	
-10	28888	. . CONNECTOR, 1/4 NPT x 3/8 tube	1	
-11	64916	. . REGULATOR ASSEMBLY, Air pressure	1	
-12	67871	. . PLUG, Pipe, socket hd, 1/8 NPT	2	
-13	192050	. . NIPPLE, Close, 1/4 NPT	1	
-14	144038	. . BUSHING, Reducing, 1/2 NPT to 1/4 NPT	1	
-15	28890	. . ELBOW, 1/4 NPT to 3/8 in. tube	2	
-16	64407	. . REGULATOR ASSEMBLY, Air pressure (see figure 8-11)	1	
-17	192074	. . NIPPLE, Close, 1/2 NPT	1	
-18	144085	. . TEE, Pipe, 1/2 NPT	1	
-19	219652	. . NIPPLE, Pipe, 1/2 NPT, 9 in. lg	1	
-20	144042	. . BUSHING, Reducing, 3/4 NPT to 1/2 NPT	1	
-21	62417	. . ADAPTER	1	
-22	26826	. . WASHER, Sealing	1	
-23	28053	. . CONNECTION, Discharge	1	
-24	122433	. . SCREW, Cap, hex hd, 1/2 - 13 NC x 1-1/2 in. lg (AP)	4	
-25	120384	. . WASHER, Lock, split, 1/2 in. (AP)	4	
-26	24031	. . PACKING, Preformed, o-ring	1	
-27	49797	. . HOUSING, Minimum pressure valve	1	
-28	9406834	. . SCREW, Cap, socket hd, 1/2 - 13 NC x 5-1/2 in. lg (AP)	4	
-29	28145	. . WASHER, Lock, internal tooth, 1/2 in. (AP)	4	
-30	144011	. . PLUG, Pipe, socket hd, 1/4 NPT	1	
-31	26844	. . VALVE ASSEMBLY, Non-return	1	
-32	443339	. . LOCKNUT, Hex, 1/2 - 13 NC	1	
-33	26847	. . WASHER, Retaining	1	
-34	26846	. . DISC, Valve	1	
-35	26848	. . HEAD, Valve	1	
-36	26845	. . STEM, Valve	1	
-37	26840	. . PISTON	1	
-38	26859	. . PACKING, Preformed, o-ring	1	
-39	26841	. . SPRING	1	
-40	26829	. . PACKING, Preformed, o-ring	1	
-41	FIG86-125-1-1-4	. . VALVE ASSEMBLY, Relief (34494) (Davey PN 49164)	1	
-42	127823	. . ELBOW, Street, 1-1/4 NPT, 90°	1	
-43	67580	. . VALVE ASSEMBLY, Blowdown (see figure 8-12 for details)	1	
-44	49170	. . COVER, Oil separator tank (furnished with tank only, not serviced) .	REF	
-45	61876	. . SCREW, Cap, hex hd, special (AP) (do not substitute)	12	
-46	131046	. . WASHER, Lock, split, 3/4 in. (AP)	12	
-47	60980	. . PIPE, Drain, separator element	1	
-48	22446	. . BOLT, Eye	2	
-49	48776	. . ELEMENT, Oil separator	1	
-50	219306	. . PLUG, Pipe, square hd, 1-1/4 NPT	1	
-51	219200	. . PLUG, Pipe, square hd, 1/2 NPT	1	
-52	143933	. . PLUG, Pipe, square hd, 1/4 NPT	1	
-53	81448	. . ELBOW, J.I.C., 1-1/2 NPT, 45°	1	
-54	48778	. . TANK ASSEMBLY, Oil separator	1	
-55	61872	. . DECAL, Fill to overflow	1	
-56	63303	. . DECAL, Oil recommendation	1	

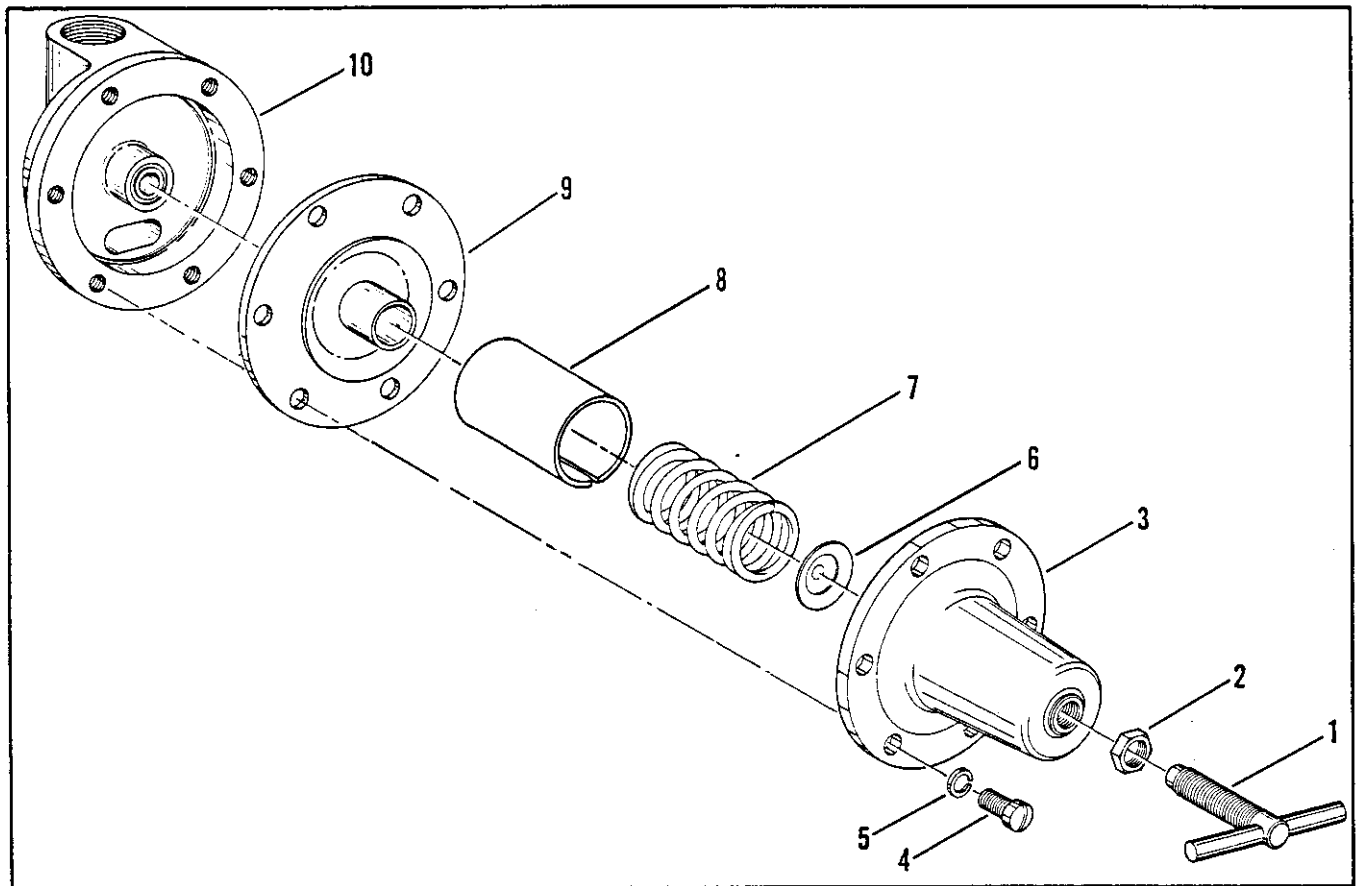


Figure 8-11. Pressure regulator assembly

FIG. & INDEX NO.	PART NUMBER	DESCRIPTION							UNITS PER ASSY	USABLE ON CODE
		1	2	3	4	5	6	7		
8-11-	64407	REGULATOR ASSEMBLY, Air pressure (see figure 8-10-16 for NHA)							REF	
-1	62507	. SCREW, Adjusting							1	
-2	120369	. NUT, Hex, 3/8-24 NF							1	
-3	62503	. HOUSING, Spring							1	
-4	132259	. SCREW, Mach., fil hd, 1/4 - 20 NC x 5/8 in. lg (AP)							6	
-5	120380	. WASHER, Lock, split, 1/4 in. (AP)							6	
-6	62502	. SEAT, Adjusting screw							1	
-7	62501	. SPRING, Regulator							1	
-8	60049	. TUBE, Spring snubber							1	
-9	64406	. DIAPHRAGM ASSEMBLY							1	
-10	64405	. BODY, Regulator							1	

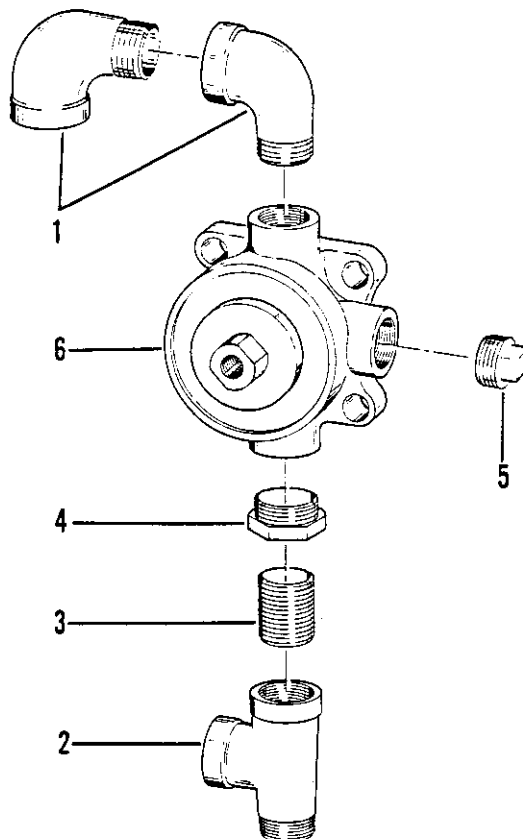


Figure 8-12. Blowdown valve assembly

FIG. & INDEX NO.	PART NUMBER	DESCRIPTION							UNITS PER ASSY	USABLE ON CODE
		1	2	3	4	5	6	7		
8-12-	67580	VALVE ASSEMBLY, Blowdown (see figure 8-10-43 for NHA)							REF	
-1	144113	. ELBOW, Pipe, street, 90°, 3/4 NPT							2	
-2	67742	. TEE, Pipe, street, 1/2 NPT							1	
-3	192074	. NIPPLE, Pipe, close, 1/2 NPT							1	
-4	144042	. BUSHING, Reducing, 3/4 to 1/2 NPT							1	
-5	219302	. PLUG, Pipe, sq hd. 3/4 NPT							1	
-6	67510	. VALVE ASSY, Blowdown							1	

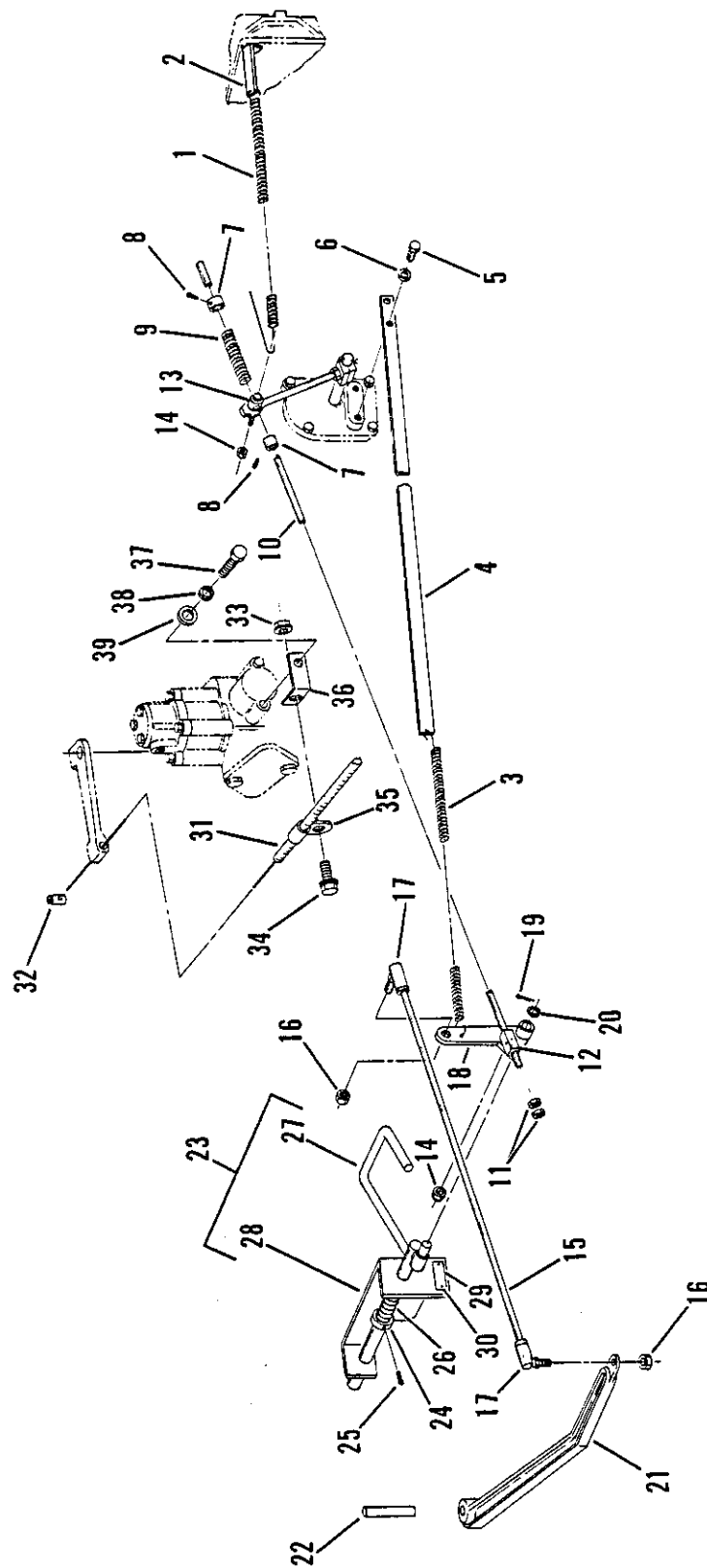


Figure 8-13. Speed control linkage group

FIG. & INDEX NO.	PART NUMBER	DESCRIPTION 1 2 3 4 5 6 7	UNITS PER ASSY	USABLE ON CODE
8-13-	No Number	SPEED CONTROL LINKAGE GROUP (See figure 8-1-45 for NHA)	REF	
-1	64377	. SPRING, Return	1	
-2	62620	. BRACKET, Spring	1	
-3	62094	. SPRING	1	
-4	67722	. BRACKET, Spring	1	
-5	122007	. SCREW, Cap, hex hd, 5/16 - 18 NC x 3/4 in. lg (AP)	2	
-6	120214	. WASHER, Lock, split, 5/16 in. (AP)	2	
-7	27917	. COLLAR	2	
-8	120628	. SCREW, Rd hd, 1/4 - 20 NC x 1/2 in. lg (AP)	2	
-9	62156	. SPRING, Control rod	1	
-10	81142	. ROD, Control	1	
-11	120367	. NUT, Hex, 1/4 - 28 NF (AP)	2	
-12	83765	. STOP BLOCK	1	
-13	18952	. STOP BLOCK	1	
-14	443332	. LOCKNUT, Hex, 1/4 - 28 NF (AP)	2	
-15	63548	. ROD, Speed control	1	
-16	443334	. LOCKNUT, Hex, 5/16 - 24 NF (AP)	2	
-17	SP1003-CP	. BALL JOINT (AP) (01428) (Davey 44125)	2	
-18	62155	. ARM, Speed control	1	
-19	121223	. PIN, Cotter, 1/16 x 3/4 in. (AP)	1	
-20	120394	. WASHER, Flat, 3/8 in. (AP)	1	
-21	62071	. ARM ASSEMBLY, Speed control	1	
-22	40596	. PIN, Arm assembly (AP)	1	
-23	62849	. IDLE CONTROL ASSEMBLY	1	
-24	61959	. COLLAR	1	
-25	125735	. SETSCREW, Cup point, 1/4 - 20 NC x 3/8 in. lg (AP)	1	
-26	61972	. SPRING, Idle shaft	1	
-27	62848	. SHAFT, Idle	1	
-28	62845	. BRACKET, Idle control	1	
-29	62508	. PLATE, Run-Start	1	
-30	68749	. SCREW, Self-tapping, no. 4-40 NC x 1/4 in. lg (AP)	2	
-31	27854	. CABLE, Engine stop	1	
-32	20588	. WIRE STOP, Stop cable (AP)	1	
-33	9416918	. NUT, Lock, hex serr flg, 1/4 - 20 NC (AP)	1	
-34	273771	. SCREW, Hex serr wash hd, 1/4 - 20 NC x 1/2 in. lg (AP)	1	
-35	60627	. CLIP, Cable	1	
-36	61763	. BRACKET, Stop cable	1	
-37	121913	. SCREW, Cap, hex hd, 1/4 - 20 NC x 1-1/4 inl lg (AP)	1	
-38	120380	. WASHER, Lock, split, 1/4 in. (AP)	1	
-39	120392	. WASHER, Flat, 1/4 in. (AP)	1	

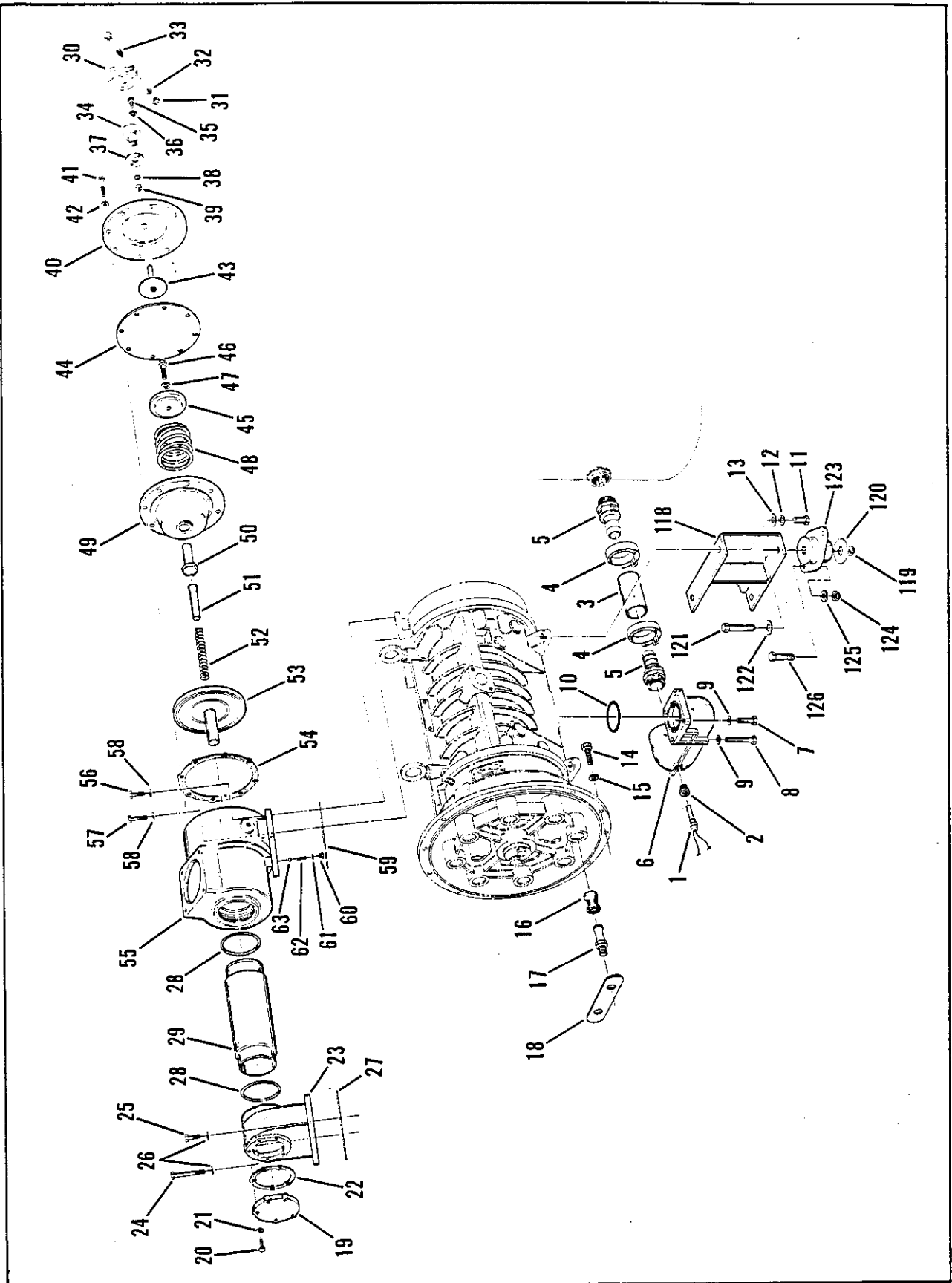


Figure 8-14. Air compressor assembly and mounting group (sheet 1 of 2)

FIG. & INDEX NO.	PART NUMBER	DESCRIPTION	UNITS PER ASSY	USABLE ON CODE
		1 2 3 4 5 6 7		
8-14	No Number	AIR COMPRESSOR ASSEMBLY AND MOUNTING GROUP	REF	
		(See figure 8-1-46 for NHA)		
-1	20T	SWITCHGAGE, Temperature, 4 ft tube (03479)	1	
		(Davey 81668)		
-2	144039	BUSHING, Reducing, 1/2 x 3/8 NPT	1	
-3	81434	HOSE, Discharge	1	
-4	81432	CLAMP, Hose	2	
-5	81430	ADAPTER, Hose	2	
-6	80321	ELBOW, Discharge	1	
-7	122145	SCREW, Cap, hex hd, 3/8 - 16 NC x 1-1/4 in. lg (AP)	2	
-8	192884	SCREW, Cap, hex hd, 3/8 - 16 NC x 6-3/4 in. lg (AP)	2	
-9	120382	WASHER, Lock, split, 3/8 in. (AP)	4	
-10	†41584	PACKING, Preformed, o-ring	1	
	62404	COMPRESSOR ASSEMBLY, Air	1	
-11	428211	SCREW, Cap, hex hd, 5/8 - 11 NC x 1-1/4 in. lg (AP)	2	
-12	121574	WASHER, Lock, split, 5/8 in. (AP)	2	
-13	131016	WASHER, Flat, 5/8 in. (AP)	2	
-14	122279	SCREW, Cap, hex hd, 7/16 - 14 NC x 1-1/2 in. lg (AP)	10	
-15	120383	WASHER, Lock, split, 7/16 in. (AP)	10	
-16	48466	BUSHING, Coupling (AP)	8	
-17	48465	PIN, Coupling, drive (AP)	8	
-18	49599	STRAP, Locking, drive pin (AP)	4	
-19	61642	COVER, Intake connection	1	
-20	122017	SCREW, Cap, hex hd, 5/16 - 18 NC x 1 in. lg (AP)	5	
-21	120214	WASHER, Lock, split, 5/16 in. (AP)	5	
-22	*60432	GASKET, Cover	1	
-23	60431	CONNECTION, Intake	1	
-24	138251	SCREW, Cap, soc hd, 3/8 - 16 NC x 3-1/4 in. lg (AP)	2	
-25	122145	SCREW, Cap, hex hd, 3/8 - 16 NC x 1-1/4 in. lg (AP)	4	
-26	28146	WASHER, Lock, internal tooth, 3/8 in. (AP)	6	
-27	*48753	GASKET, Connection	1	
-28	48499	PACKING, Preformed, o-ring	2	
-29	48494	TUBE, Intake	1	
-30	61757	CLAMP, Pivot	1	
-31	120375	NUT, Plain hex, 1/4 - 20 NC (AP)	1	
-32	120380	WASHER, Lock, split, 1/4 in. (AP)	1	
-33	121966	SCREW, Cap, hex hd, 1/4 - 20 NC x 2-1/2 in. lg (AP)	1	
-34	61759	GUIDE, Push rod	1	
-35	426816	SCREW, Cap, socket hd, 1/4 - 20 NC x 3/4 in. lg (AP)	2	
-36	28149	WASHER, Lock, internal tooth, 1/4 in. (AP)	2	
-37	*61761	GASKET, Guide	1	
-38	24498	PACKING, Preformed, o-ring	1	
-39	26981	BUSHING	1	
-40	61786	COVER, Intake control	1	
-41	122181	SCREW, Cap, hex hd, 3/8 - 16 NC x 2 in. lg (AP)	8	
-42	28146	WASHER, Lock, internal tooth, 3/8 in. (AP)	8	
-43	61953	PUSH ROD ASSEMBLY	1	
-44	48463	DIAPHRAGM, Intake control	1	
-45	48464	PISTON, Intake control	1	
-46	122433	SCREW, Cap, hex hd, 1/2 - 13 NC x 1-1/2 in. lg (AP)	1	
-47	28145	WASHER, Lock, internal tooth, 1/2 in. (AP)	1	
-48	48462	SPRING, Piston	1	
-49	48477	CYLINDER, Intake control	1	
-50	48467	STEM, Piston	1	
-51	46807	GUIDE, Intake control	1	
-52	61707	SPRING, Guide	1	
-53	48475	VALVE ASSEMBLY, Intake control	1	
-54	*48754	GASKET, Cover intake control	1	
-55	48491	BODY, Intake control	1	
-56	122145	SCREW, Cap, hex hd, 3/8 - 16 NC x 1-1/4 in. lg (AP)	4	

† Component of kit no. 62340

* Component of kit no. 62339

FIG. & INDEX NO.	PART NUMBER	DESCRIPTION							UNITS PER ASSY	USABLE ON CODE
		1	2	3	4	5	6	7		
8-14-57	122168	.	.	SCREW, Cap, hex hd, 3/8 - 16 NC x 1-3/4 in. lg (AP)					2	
-58	28146	.	.	WASHER, Lock, internal tooth, 3/8 in. (AP)					6	
-59	*48753	.	.	GASKET, Body intake control					1	
-60	45121	.	.	PLUG					1	
-61	† 24498	.	.	PACKING, Preformed, o-ring					1	
-62	46888	.	.	SPRING					1	
-63	24527	.	.	BALL, Steel, 5/16 in. dia					1	
-64	48483	.	.	COUPLING, Drive					1	
-65	61240	.	.	SCREW, Cap, hex hd, special, 5/8 - 11 NC x 1-3/4 in. lg (AP)					2	
-66	121574	.	.	WASHER, Lock, split, 5/8 in. (AP)					2	
-67	48495	.	.	RETAINER, Coupling (AP)					1	
-68	48484	.	.	COLLET, Coupling (AP)					2	
-69	24984	.	.	KEY, Dowel, coupling (AP)					1	
-70	48757	.	.	ADAPTER, Engine mounting					1	
-71	428799	.	.	SCREW, Cap, hex hd, 3/4 - 10 NC x 4-1/2 in. lg (AP)					8	
-72	26826	.	.	WASHER, Sealing (AP)					8	
-73	*48759	.	.	GASKET, Adapter					1	
-74	48486	.	.	COVER, Oil seal, drive end					1	
-75	122040	.	.	SCREW, Cap, hex hd, 5/16 - 18 NC x 1-1/2 in. lg (AP)					8	
-76	28147	.	.	WASHER, Lock, internal tooth, 5/16 in. (AP)					8	
-77	350-450-16	.	.	SEAL, Oil (71724) (Davey PN 47702)					1	
-78	143932	.	.	PLUG, Pipe, sq hd, 1/8 NPT					1	
-79	*48752	.	.	GASKET, Cover					1	
-80	† 48498	.	.	PACKING, Preformed, o-ring					1	
-81	48461	.	.	SLEEVE, Seal					1	
-82	48470	.	.	SLEEVE, Bearing lock					1	
-83	† 24196	.	.	PACKING, Preformed, o-ring					1	
-84	48485	.	.	COVER, Bearing, non-drive end					1	
-85	122040	.	.	SCREW, Cap, hex hd, 5/16 - 18 NC x 1-1/2 in. lg (AP)					8	
-86	28147	.	.	WASHER, Lock, internal tooth, 5/16 in. (AP)					8	
-87	*48752	.	.	GASKET, Cover					1	
-88	62574	.	.	RETAINER, Bearing					1	
-89	122145	.	.	SCREW, Cap, hex hd, 3/8 - 16 NC x 1-1/4 in. lg (AP)					4	
-90	120382	.	.	WASHER, Lock, split, 3/8 in. (AP)					4	
-91	48480	.	.	COVER, Non-drive end					1	
-92	428793	.	.	SCREW, Cap, hex hd, 3/4 - 10 NC x 4 in. lg (AP)					8	
-93	26826	.	.	WASHER, Sealing (AP)					8	
-94	† 48497	.	.	PACKING, Preformed, o-ring					1	
-95	E5314UMR	.	.	BEARING, Non-drive end (51600) (Davey PN 48472)					1	
-95	E5314B	.	.	ALTERNATE, BEARING, Non-drive end (51600) (Davey PN 48472)					1	
-96	143933	.	.	PLUG, Pipe, sq hd, 1/4 NPT					1	
-97	62309	.	.	BLADE, Rotor					24	
-98	62321	.	.	ROTOR					1	
-98	62896	.	.	ALTERNATE ROTOR					1	
-99	62250	.	.	KEY, Dowel, rotor					1	
-100	48481	.	.	COVER, Drive end					1	
-101	† 48497	.	.	PACKING, Preformed, o-ring					1	
-102	62358	.	.	SHAFT, Rotor					1	
-103	LP5314UMR	.	.	BEARING, Drive end (51600) (Davey PN 48471)					1	
-103	LP5314U	.	.	ALTERNATE, BEARING, Drive end (51600) (Davey PN 48471)					1	
-104	18806	.	.	PLATE, Rotation					1	
-105	145369	.	.	SCREW, Drive, no. 4 x 3/16 in. lg (AP)					2	
-106	43392	.	.	PLUG, Valve					4	
-107	† 24964	.	.	PACKING, Preformed, o-ring					4	
-108	43394	.	.	SPRING, Valve					4	
-109	43393	.	.	VALVE					4	
	48489	.	.	VALVE ASSEMBLY, Drain					1	
-110	48488	.	.	BODY, Valve, drain					1	
-111	48490	.	.	PIN					1	
-112	24525	.	.	BALL, Steel, 5/8 in. dia					1	

† Component of kit no. 62340

* Component of kit no. 62339

FIG. & INDEX NO.	PART NUMBER	DESCRIPTION							UNITS PER ASSY	USABLE ON CODE
		1	2	3	4	5	6	7		
8-14-113	†48496	.	.	PACKING, Preformed, o-ring					1	
-114	44972	.	.	PLATE, Identification					1	
-115	145369	.	.	SCREW, Drive, no. 4 x 3/16 in. lg (AP)					2	
-116	3075	.	.	BOLT, Eye (71177) (Davey PN 22446)					2	
-117	48460	.	.	STATOR					1	
-118	80319	.	.	BRACKET, Compressor mounting					1	
-119	272685	.	.	LOCKNUT, Hex, 3/4 - 10 NC (AP)					2	
-120	80907	.	.	WASHER, Snubbing (AP)					2	
-121	428799	.	.	SCREW, Cap, hex hd, 3/4 - 10 NC x 4-1/2 in. lg (AP).....					2	
-122	67924	.	.	WASHER, Flat, S.A.E., 3/4 in. (AP)					2	
-123	512-4-N-S	.	.	VIBRATION MOUNT (81860)(Davey 80840)					2	
-124	443339	.	.	LOCKNUT, Hex, 1/2 - 13 NC (AP).....					4	
-125	120396	.	.	WASHER, Flat, 1/2 inc. (AP).....					4	
-126	122433	.	.	SCREW, Cap, hex hd, 1/2 - 13 NC x 1-1/2 in. lg (AP)					4	
	62339	KIT, Gasket, compressor							1	
	62340	KIT, Preformed packing, compressor							1	

† Component of kit no. 62340

* Component of kit no. 62339

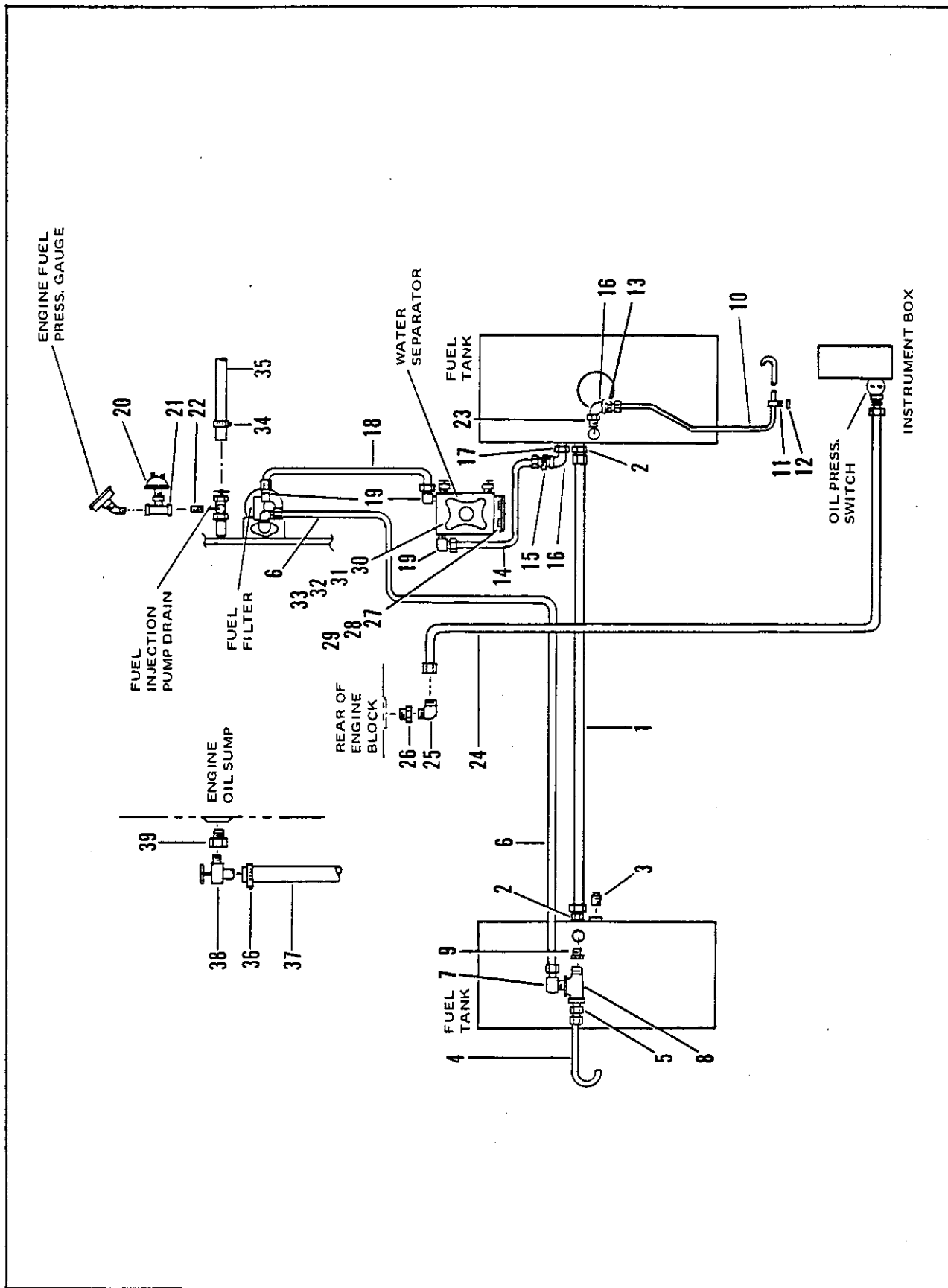


Figure 8-15. Fuel and oil line system

FIG. & INDEX NO.	PART NUMBER	DESCRIPTION 1 2 3 4 5 6 7	UNITS PER ASSY	USABLE ON CODE
8-15-	No Number	FUEL AND OIL LINE SYSTEM (See figure 8-1-47 for NHA)	REF	
-1	63300	. HOSE ASSEMBLY, Tank interconnecting	1	
-2	23671	. ADAPTER, 3/4 NPT x No. 12 hose	2	
-3	143162	. PLUG, Pipe, sch, 3/8 NPT	1	
-4	67400	. TUBE ASSEMBLY, vent	1	
-5	28836	. CONNECTOR, 1/4 NPT x 1/4 tube	1	
-6	83567	. HOSE ASSEMBLY, Fuel return	1	
-7	69185	. ELBOW, J.I.C., 1/4 in.	1	
-8	67800	. TEE, Street, 1/4 NPT	1	
-9	116332	. BUSHING, Reducing, 3/8 x 1/4 NPT	1	
-10	68129	. TUBE ASSEMBLY, Vent	1	
-11	11030	. CLIP, Tubing (AP)	1	
-12	120391	. WASHER, Flat, no. 10 (AP)	1	
-13	28836	. CONNECTOR, 1/4 NPT x 1/4 tube	1	
-14	61093	. HOSE ASSEMBLY, Fuel	1	
-15	42233	. DRAIN COCK	1	
-16	144112	. ELBOW, Street, 90°, 1/4 NPT	2	
-17	116332	. BUSHING, Reducing, 3/8 x 1/4 NPT	1	
-18	61090	. HOSE ASSEMBLY, Fuel	1	
-19	28890	. ELBOW, 1/4 NPT x 3/8 tube	3	
-20	1506989	. SWITCH, Fuel pressure (24144) (Davey 62497)	1	
-21	144082	. TEE, Pipe, 1/8 NPT	1	
-22	192032	. NIPPLE, Pipe, close, 1/8 NPT	1	
-23	116332	. BUSHING, Reducing, 3/8 x 1/4 NPT	1	
-24	45815	. HOSE ASSEMBLY, Oil pressure	1	
-25	44209	. ELBOW, 1/4 NPT x 5/16 tube	1	
-26	144038	. BUSHING, Reducing, 1/2 x 1/4 NPT	1	
-27	81867	. BRACKET, Water separator	1	
-28	9416918	. NUT, Lock, hex serr flg, 1/4 - 20 NC (AP)	2	
-29	274825	. SCREW, Hex serr wash hd, 1/4-20 NC x 3/4 in. lg (AP)	2	
-30	120376	. NUT, Hex, 5/16 - 18 NC (AP)	4	
-31	120214	. WASHER, Lock, split, 5/16 in. (AP)	4	
-32	122017	. SCREW, Cap, hex hd, 5/16 - 18 NC x 1 in. lg (AP)	4	
-33	120393	. WASHER, Flat, 5/16 in. (AP)	4	
-34	65249	. CLAMP, Hose	1	
-35	82650	. HOSE, Drain, fuel injection pump	1	
-36	70844	. CLAMP, Hose	1	
-37	82672	. HOSE, Engine oil drain, 5/8 in. ID	1	
-38	82663	. VALVE, Drain, engine oil	1	
-39	82670	. PLUG, Drain, engine oil	1	

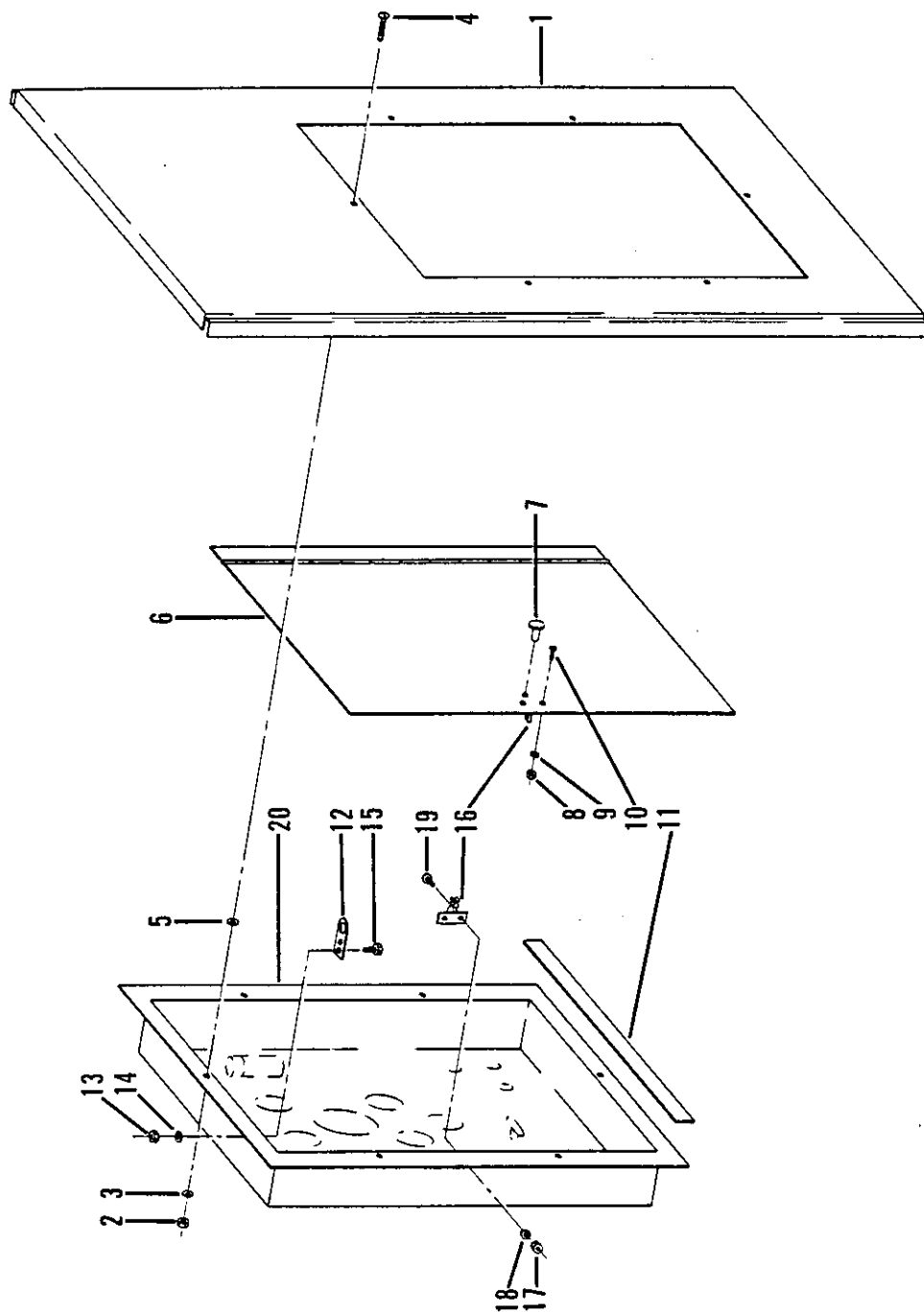


Figure 8-16. Mullion and control box assembly

FIG. & INDEX NO.	PART NUMBER	DESCRIPTION	UNITS PER ASSY	USABLE ON CODE
		1 2 3 4 5 6 7		
8-16-	81781	MULLION AND CONTROL BOX ASSY (See figure 8-4-10 for NHA)	REF	
-1	80329	. PANEL, Mullion	1	
-2	115295	. NUT, Hex, no. 10-32NF (AP)	6	
-3	120217	. WASHER, Lock, split, no. 10 (AP)	6	
-4	132900	. SCREW, Mach, rd hd, no. 10-32 NF x 3/8 in. lg (AP)	6	
-5	120391	. WASHER, Flat, no. 10 (AP)	4	
-6	81594	. DOOR, Instrument box	1	
-7	551	. KNOB, Door (01930) (Davey 82507)	1	
-8	114653	. NUT, Hex, no. 8-32 NC (AP)	2	
-9	121841	. WASHER, Lock, split, no. 8 (AP)	2	
-10	121832	. SCREW, Mach, rd hd, no. 8 - 32 NC x 3/8 in. lg (AP)	2	
-11	51228	. GASKET, Weather strip	39 in.	
-12	81575	. BRACKET, Door	1	
-13	115295	. NUT, Hex, no. 10-32 NF (AP)	2	
-14	120217	. WASHER, Lock, split, no. 10 (AP)	2	
-15	132900	. SCREW, Mach, rd hd, no. 10-32 NF x 3/8 in. lg (AP)	2	
-16	BP-9700-2G	. DOOR CATCH AND STRIKE (01930) (Davey 66373)	1	
-17	114653	. NUT, Hex, no. 8-32 NC (AP)	2	
-18	121841	. WASHER, Lock, split, no. 8 (AP)	2	
-19	121832	. SCREW, Mach, rd hd, no. 8-32 NC x 3/8 in. lg (AP)	2	
-20	81101	. INSTRUMENT BOX ASSY (See figure 8-17)	1	

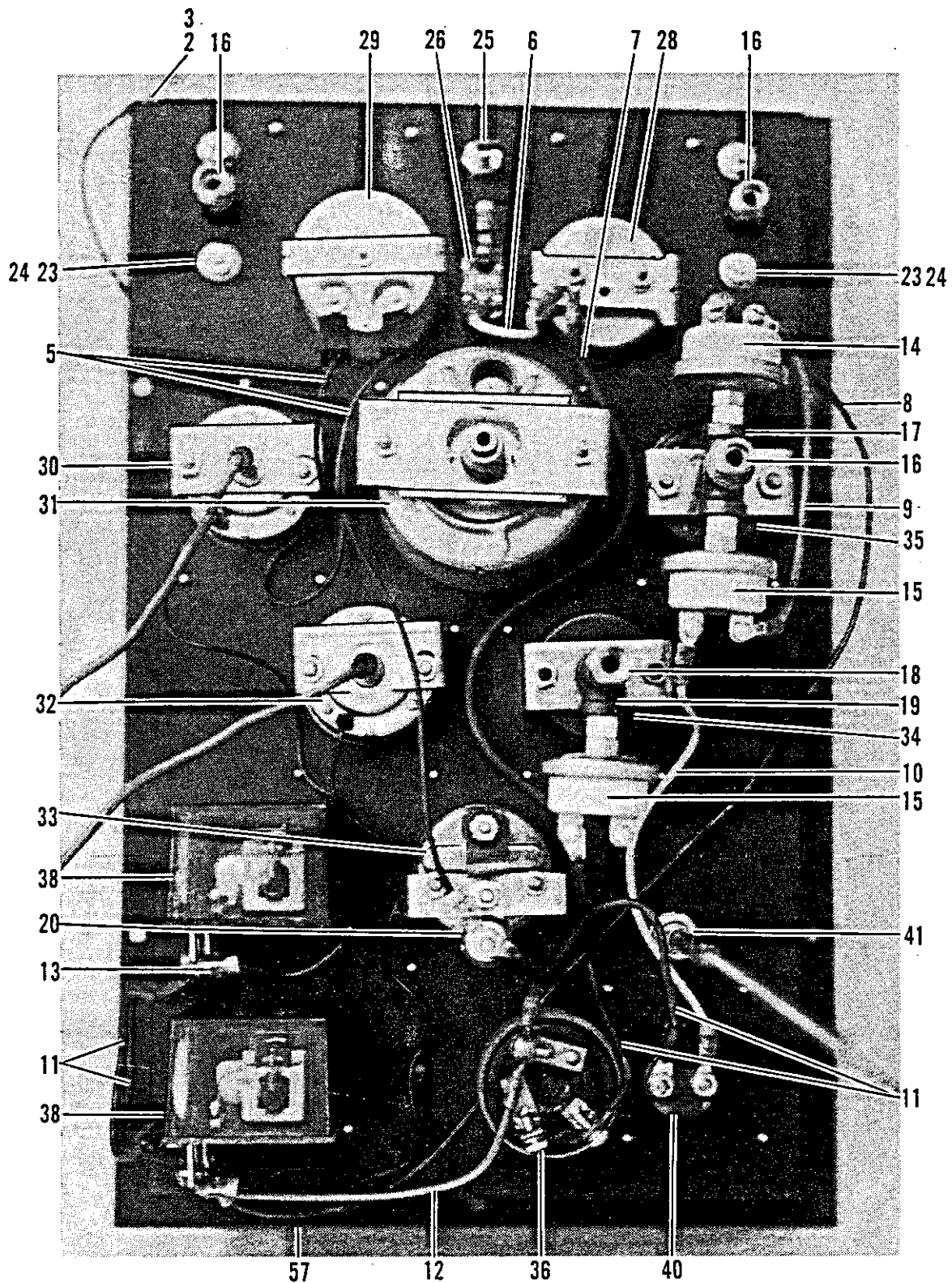


Figure 8-17. Instrument box assembly (sheet 1 of 2)

FIG. & INDEX NO.	PART NUMBER	DESCRIPTION	UNITS PER ASSY	USABLE ON CODE
		1 2 3 4 5 6 7		
8-17-	81101	INSTRUMENT BOX ASSEMBLY (See figure 8-16-20 for NHA)	REF	
-1	82520	. PROP, Door	1	
-2	120361	. NUT, Hex, no. 10-24 NC (AP)	2	
-3	120217	. WASHER, Lock, split, no. 10 (AP)	1	
-4	274957	. SCREW, Mach, hex hd, no. 10-24 NC x 3/4 in. lg (AP)	1	
-5	49292	. WIRE ASSEMBLY, Hourmeter	2	
-6	29187	. WIRE ASSEMBLY, Lamp switch, yellow	1	
-7	49622	. WIRE ASSEMBLY, Ammeter, brown	1	
-8	49061	. WIRE ASSEMBLY, Pressure switch, black	1	
-9	49294	. WIRE ASSEMBLY, Pressure switch, orange	1	
-10	64881	. WIRE ASSEMBLY, Pressure switch, white	1	
-11	40830	. WIRE ASSEMBLY, Red	4	
-12	49057	. WIRE ASSEMBLY, Green	1	
-13	24855	. TERMINAL, Ring, no. 10 stud	3	
-14	M4006-4	. PRESSURE SWITCH, N.O. (77400) (Davey 14439)	1	
-15	M4009-1	. PRESSURE SWITCH, N.C. (77400) (Davey 37989)	2	
-16	41935	. CONNECTOR, 1/8 NPT x 5/16 tube	3	
-17	144150	. CROSS, Pipe, 1/8 NPT	1	
-18	40783	. CONNECTOR, 1/8 NPT x 3/8 tube	1	
-19	144082	. TEE, Pipe, 1/8 NPT	1	
-20	G428989	. RESISTOR (57733) (Davey 44365)	1	
-21	RAX00-2325	. INDICATOR, Restriction (18265) (Davey 45899)	2	
-22	80255	. MANIFOLD, Restriction indicator	2	
-23	9416918	. NUT, Lock, hex serr flg, 1/4 - 20 NC (AP)	4	
-24	273771	. SCREW, Hex serr wash hd, 1/4 -20NC x 1/2 in. lg (AP)	4	
-25	233	. LAMP, Panel (80753) (Davey 80268)	1	
-26	8801-K22	. SWITCH, Toggle, lamp (15605) (Davey 27670)	1	
-27	827-228-F3	. PLATE, Switch, on-off (15605) (Davey 27671)	1	
-28	4015-98	. AMMETER (09527) (Davey 48271)	1	
-29	69208	. HOURMETER	1	
-30	20T	. GAUGE, Temperature, engine water (03479) (Davey 81825)	1	
-31	551-AKM	. TACHOMETER (57733) (Davey 61901)	1	
-32	20T	. GAUGE, Temperature, compressor oil (03479) (Davey 81668)	1	
-33	82211	. GAUGE, Fuel level (57733) (Davey 42341)	1	
-34	81667	. GAUGE, Air pressure	1	
-35	2550-108	. GAUGE, Engine oil pressure (09393) (Davey 62085)	1	
-36	8S7713	. SWITCH, Heat-start (11083) (Davey 81288)	1	
-37	1M3363	. PLATE, Heat-Start switch (11083) (Davey 81290)	1	
-38	274	. SWITCH, Magnetic (03479) (Davey 81824)	2	
-39	81549-6	. PLUG, Hole, 3/8 in.	2	
-40	5570-3	. PUSHBUTTON, Safety override (87930) (Davey 62063)	1	
-41	27854	. STOP CABLE, Engine (see figure 8-13-31)	REF	
-42	81550	. PLATE, Ident, compressor restriction indicator	1	
-43	81551	. PLATE, Ident, engine restriction indicator	1	
-44	66161	. PLATE, Ident, ammeter	1	
-45	66162	. PLATE, Ident, hourmeter	1	
-46	60488	. PLATE, Ident, engine oil pressure	1	
-47	80811	. PLATE, Ident, tachometer	1	
-48	60491	. PLATE, Ident, engine water temp	1	
-49	60487	. PLATE, Ident, receiver pressure	1	
-50	60490	. PLATE, Ident, compressor oil temp	1	
-51	60493	. PLATE, Ident, fuel gauge	1	
-52	61619	. PLATE, Ident, stop	1	
-53	61624	. PLATE, Ident, safety	1	
-54	80889	. PLATE, Ident, engine water temp reset	1	
-55	80888	. PLATE, Ident, compressor oil temp reset	1	
-56	68749	. SCREW, Self-tapping, no. 4-40 x 1/4 in. lg (AP) (two per ident plate) ..	28	
-57	81417	. BOX, Instrument	1	

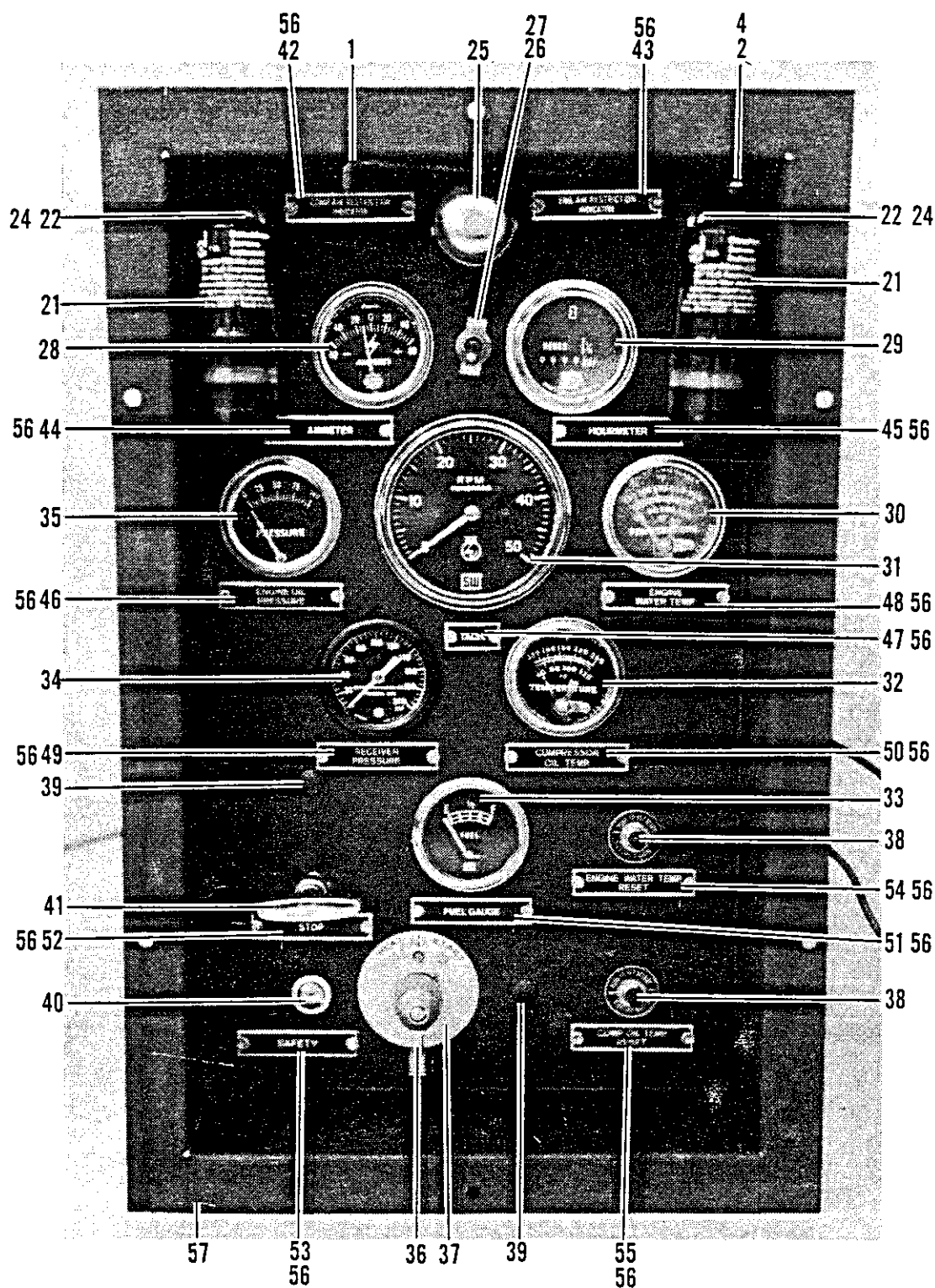


Figure 8-17. Instrument box assembly (sheet 2 of 2)

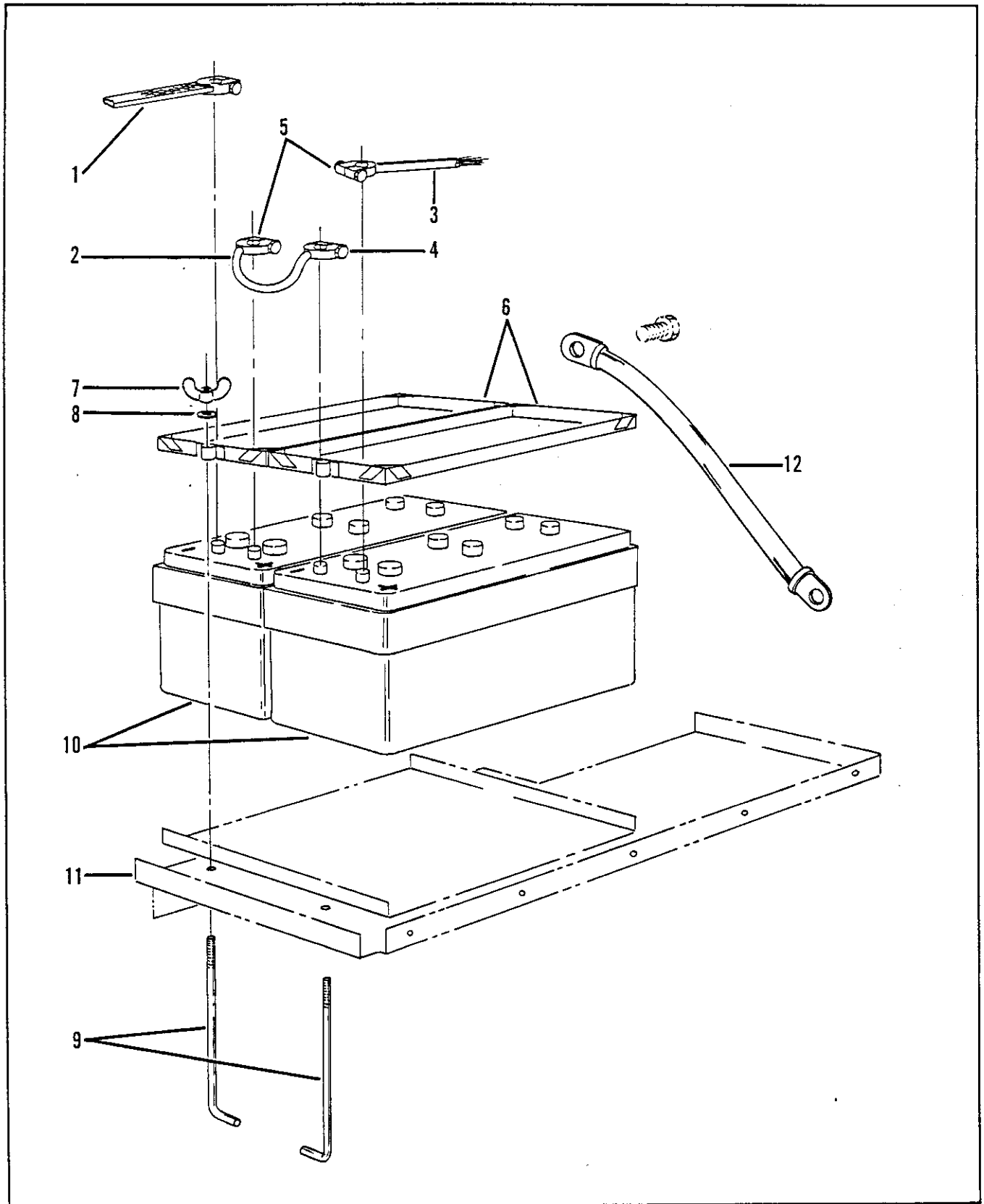


Figure 8-18. Battery mounting group

FIG. & INDEX NO.	PART NUMBER	DESCRIPTION							UNITS PER ASSY	USABLE ON CODE
		1	2	3	4	5	6	7		
8-18	No Number	BATTERY MOUNTING AND CABLES GROUP							1	
-1	83805	. CABLE, Battery, negative ground							1	
-2	29942	. CABLE, Battery, jumper							1	
-3	83804	. CABLE, Battery, positive							1	
-4	5292850	. TERMINAL, Battery, negative, (77060) (Davey 24638)							1	
-5	5292849	. TERMINAL, Battery, positive, (77060) (Davey 24639)							2	
-6	24668	. BRACKET, Battery holddown.....							2	
-7	126032	. WINGNUT, 3/8 - 16 NC (AP).....							4	
-8	120394	. WASHER, Flat, 3/8 in. (AP)							4	
-9	48808	. ANGLE BOLT, Battery holddown							4	
-10	4D-A9Y	. BATTERY, Storage, 12 volt (19728) (Davey 24669)							2	
-11	81730	. TRAY, Battery, right side (see figure 8-4-21 for NHA)							REF	
-12	49791	. CABLE, Engine ground, front engine cover to fan shroud							1	

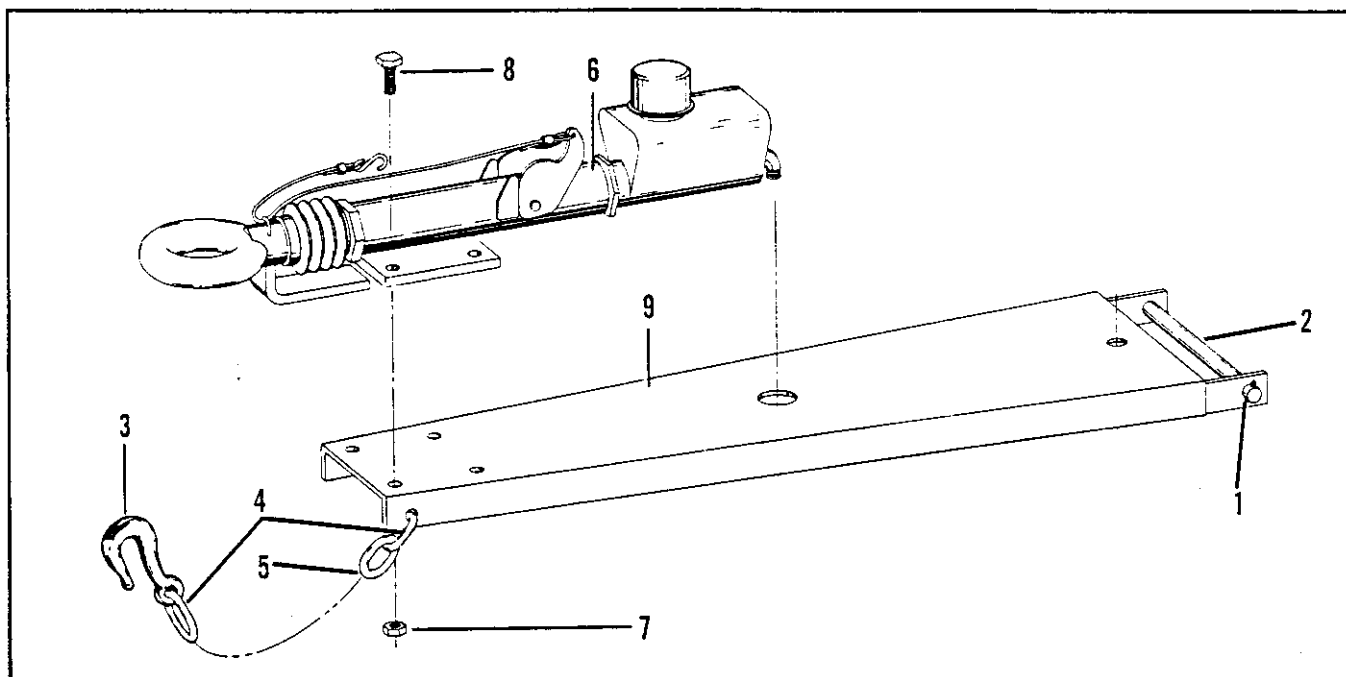


Figure 8-19. Drawbar assembly

FIG. & INDEX NO.	PART NUMBER	DESCRIPTION							UNITS PER ASSY	USABLE ON CODE
		1	2	3	4	5	6	7		
8-19-	5-3504	DRAWBAR ASSEMBLY (See figure 8-1-57 for NHA) (22938)							REF	
-1	4800-6	. PIN, Cotter, 1/4 x 1-1/2 in. (AP) (22938)							2	
-2	5406-2	. PIN, Hinge (AP) (22938)							1	
-3	5275-4	. HOOK, Safety chain (22938)							2	
-4	5275-5	. END LINK, Chain (AP) (22938)							4	
-5	5275-12	. CHAIN, Safety (22938)							2	
-6	622341	. ACTUATOR ASSEMBLY, Surge brake (93072) (22938 PN 5708)							1	
		(see figure 8-20)								
-7	4601-16	. LOCKNUT, Hex, 5/8 - 18 NF (AP) (22938)							4	
-8	4901-22	. SCREW, Cap, hex hd, 5/8 - 18 NF x 1-1/2 in. lg (AP) (22938)							4	
-9	5-3504-2	. DRAWBAR (22938)							1	

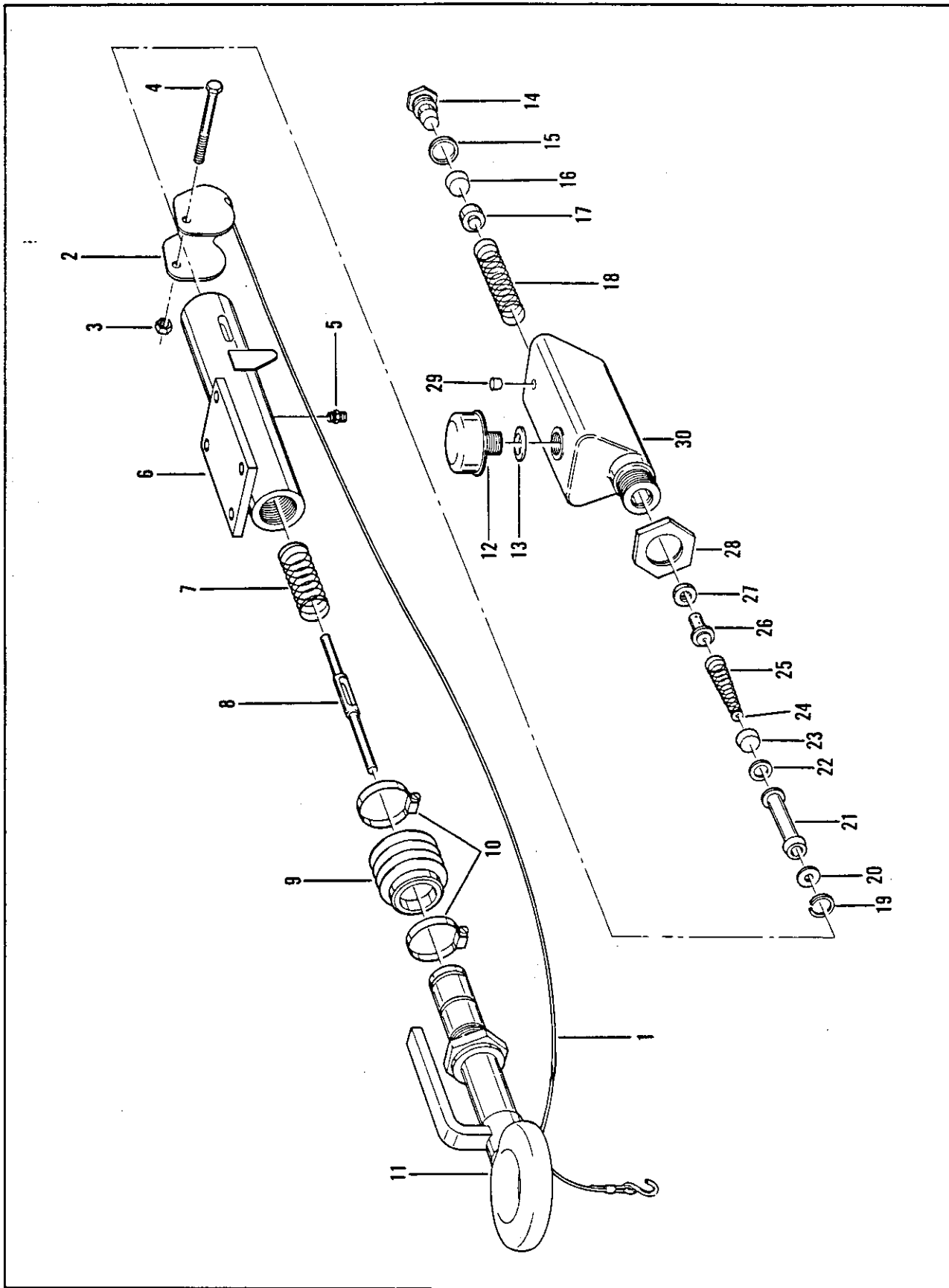


Figure 8-20. Surge brake actuator

FIG. & INDEX NO.	PART NUMBER	DESCRIPTION 1 2 3 4 5 6 7	UNITS PER ASSY	USABLE ON CODE
8-20-	622341	ACTUATOR ASSEMBLY, Surge brake (93072) (see figure 8-19-6 for NHA) (22938 PN 5708)	REF	
-1	622279	. CABLE, Breakaway (93072)	1	
-2	622162	. LEVER, Breakaway (93072).....	1	
-3	1847	. NUT, Hex, breakaway lever (AP) (93072)	1	
-4	622175	. SCREW, Cap, hex hd (AP) (93072)	1	
-5	52133-9	. FITTING, Lube (93072)	2	
-6	622109-1	. SLEEVE AND MOUNTING ASSEMBLY (93072)	1	
-7	622214	. SPRING, Surge brake actuator (93072)	1	
-8	622161	. ROD, Push, surge brake actuator (93072)	1	
-9	621001	. BOOT, Surge brake actuator (93072)	1	
-10	580546	. CLAMP, Boot, surge brake actuator (AP) (93072)	2	
-11	622060-2	. TOWBAR ASSEMBLY (93072).....	1	
-12	622151	. CAP, Filler, surge brake actuator (93072)	1	
-13	580342	. GASKET, Filler cap (93072)	1	
	580376-7	. MASTER CYLINDER ASSEMBLY, Surge brake actuator (93072)	1	
-14	57683	. . RETAINER, Master cylinder (93072)	1	
-15	*57623	. . GASKET, Retainer, master cylinder (93072)	1	
-16	*580334	. . CUP, Master cylinder (93072)	1	
-17	580382	. . SEAT, Spring, master cylinder (93072)	1	
-18	622089	. . SPRING, Master cylinder (93072)	1	
-19	*580340	. . RING, Lock, master cylinder (93072)	1	
-20	580339	. . PLATE, Stop, master cylinder (93072)	1	
-21	*580338	. . PISTON ASSEMBLY, Master cylinder (93072)	1	
-22	*580380	. . PROTECTOR, Cup, master cylinder (93072).....	1	
-23	*580384	. . CUP, Primary, master cylinder (93072)	1	
-24	*580863	. . CAP, Return spring, master cylinder (93072)	1	
-25	*580337	. . SPRING, Piston return, master cylinder (93072)	1	
-26	*580336	. . VALVE ASSEMBLY, Master cylinder (93072)	1	
-27	*580383	. . SEAT, Valve assembly, master cylinder (93072)	1	
-28	57504	. . NUT, Lock, master cylinder (93072)	1	
-29	580255-1	. . BLEEDER ASSEMBLY, Master cylinder (93072)	1	
-30	57812-2	. . HOUSING, Master cylinder (93072)	1	
	622176	KIT, Repair, master cylinder (93072).....	1	

*Component of kit no. 622176

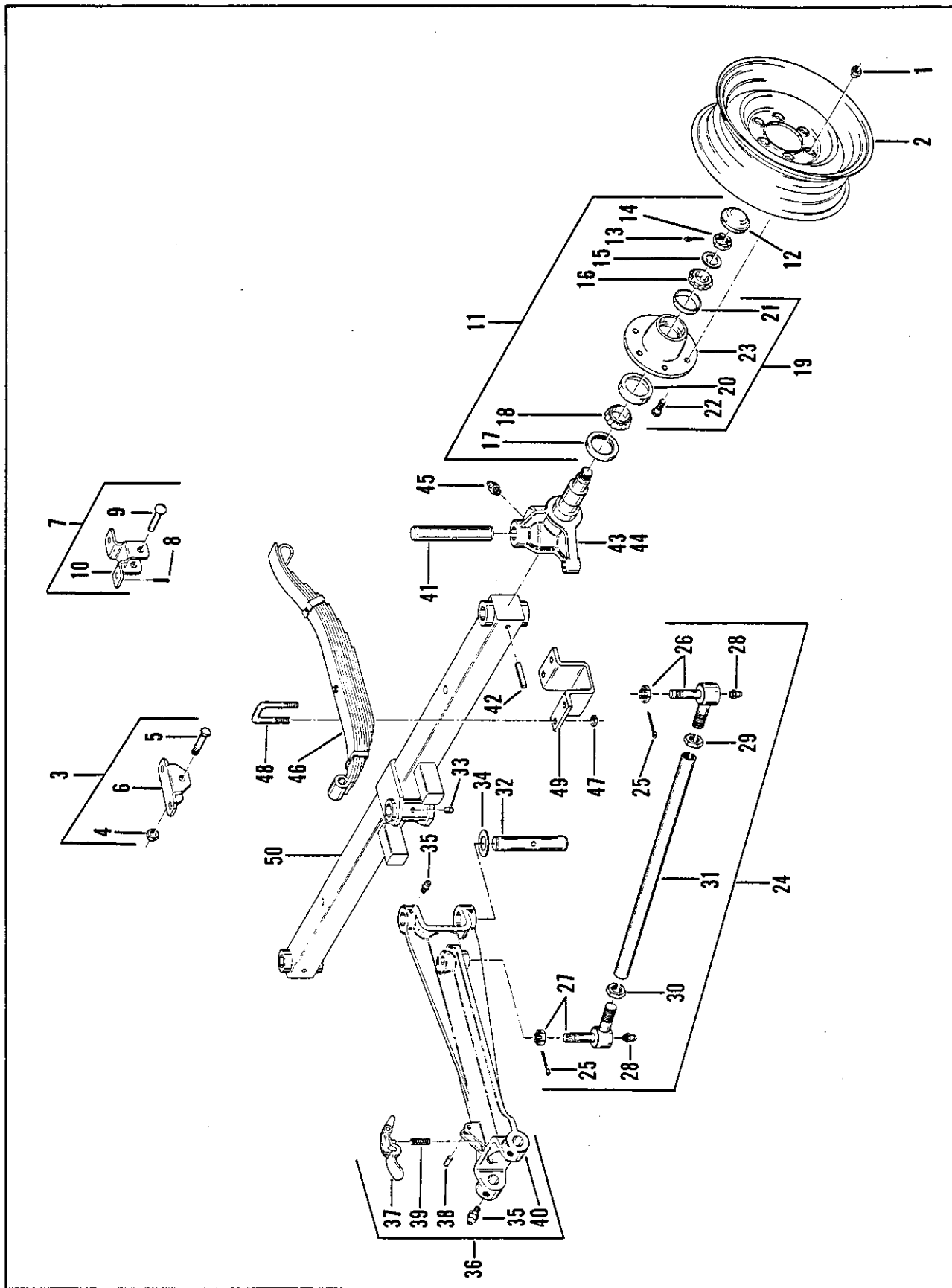


Figure 8-21. Front axle assembly

FIG. & INDEX NO.	PART NUMBER	DESCRIPTION	UNITS PER ASSY	USABLE ON CODE
8-21-	504-2396	FRONT AXLE ASSEMBLY (See figure 8-1-58 for NHA) (22938)	REF	
-1	4603-1	. NUT, Wheel, cone face (22938)	16	
		(component of hub assy 1-3634, index 11 below)		
-2	504-2396 91905	. WHEEL (See figure 8-1-58 for NHA) (24231) (16004 PN 81240)	REF 2	
-3	1-4250	. BRACKET ASSY, Front, spring (22938)	2	
-4	4601-33	. LOCKNUT, Hex, 9/16 - 12 NC (AP) (22938)	1	
-5	4901-19	. SCREW, Cap, hex hd, 9/16 - 12 NC x 3-3/4 in. lg (AP) (22938)	1	
-6	4250	. BRACKET, Spring, front (AP) (22938) (Davey 27797, welded to ... unit frame)	REF	
-7	1-4251	. BRACKET ASSY, Rear, spring (22938)	2	
-8	4800-3	. PIN, Cotter, 1/8 x 1 in. (AP) (22938)	1	
-9	5403-1	. RIVET, Rd. hd, 9/16 dia x 3 in. lg (AP) (22938)	1	
-10	4251	. BRACKET, Spring, rear (AP) (22938)	REF	
		(Davey 27798, welded to unit frame)		
-11	1-3634	. HUB ASSEMBLY, Front (22938)	2	
-12	6312	. CAP, Grease (22938)	1	
-13	4800-5	. PIN, Cotter, 1/8 x 2 in. (AP) (22938)	2	
-14	4600-2	. NUT, Spindle, sltd hex, 1-14 NF (AP) (22938)	2	
-15	4702-2	. WASHER, Spindle, tongue, 1 in. (AP) (22938)	2	
-16	15123	. CONE, Bearing, outer (60038) (22938 PN 6058)	1	
-17	6311	. SEAL, Grease (22938)	1	
-18	24780	. CONE, Bearing, inner (60038) (22938 PN 6057)	1	
-19	2-3634	. HUB SUBASSEMBLY (22938)	1	
-20	24720	. CUP, Bearing, inner (60038) (22938 PN 6152)	1	
-21	15245	. CUP, Bearing, outer (60038) (22938 PN 6151)	1	
-22	6251-14	. BOLT, Hub (22938)	8	
-23	3634	. HUB, Wheel (22938)	1	
-24	3905-285	. TIE ROD ASSEMBLY (22938)	2	
-25	4800-1	. PIN, Cotter, 1/8 x 1-1/2 in. (22938)	2	
-26	3953	. BALL JOINT, Knuckle end, with nut (22938)	1	
-27	3954	. BALL JOINT, Center arm, with nut (22938)	1	
-28	5801	. FITTING, Lubrication (22938)	2	
-29	4605-2	. NUT, Hex jam, 1-16 rh thd (22938)	1	
-30	4605-1	. NUT, Hex jam, 1-16 lh thd (22938)	1	
-31	3905-245	. TUBE, Tie rod (22938)	1	
-32	5408	. PIN, Center arm (22938)	1	
-33	5000-8	. ROLL PIN (AP) (22938)	1	
-34	4701-9	. WASHER, Flat (AP) (22938)	1	
-35	5800	. FITTING, Lubrication (22938)	4	
-36	2-3864	. ARM ASSY, Center, steering (22938)	1	
-37	3853	. LATCH, Foot (22938)	1	
-38	5000-1	. ROLL PIN (AP) (22938)	1	
-39	4006	. SPRING, Latch (22938)	1	
-40	3864	. ARM, Center steering (22938)	1	
-41	5408	. KING PIN, Steering knuckle (22938)	2	
-42	5000-8	. ROLL PIN (AP) (22938)	2	
-43	5-3807	. KNUCKLE ASSY, Spindle, LH (22938)	1	
-44	6-3807	. KNUCKLE ASSY, Spindle, RH (22938)	1	
-45	5800	. FITTING, Lubrication (22938)	4	
-46	1-4010-5	. SPRING (22938)	2	
-47	4601-7	. LOCKNUT, Hex, 1/2 - 20 NF (AP) (22938)	8	
-48	5100-13	. U-BOLT, Spring (AP) (22938)	4	
-49	5601-5	. TIE PLATE, Spring (AP) (22938)	2	
-50	504-239X-1	. BEAM ASSY, Axle (22938)	1	

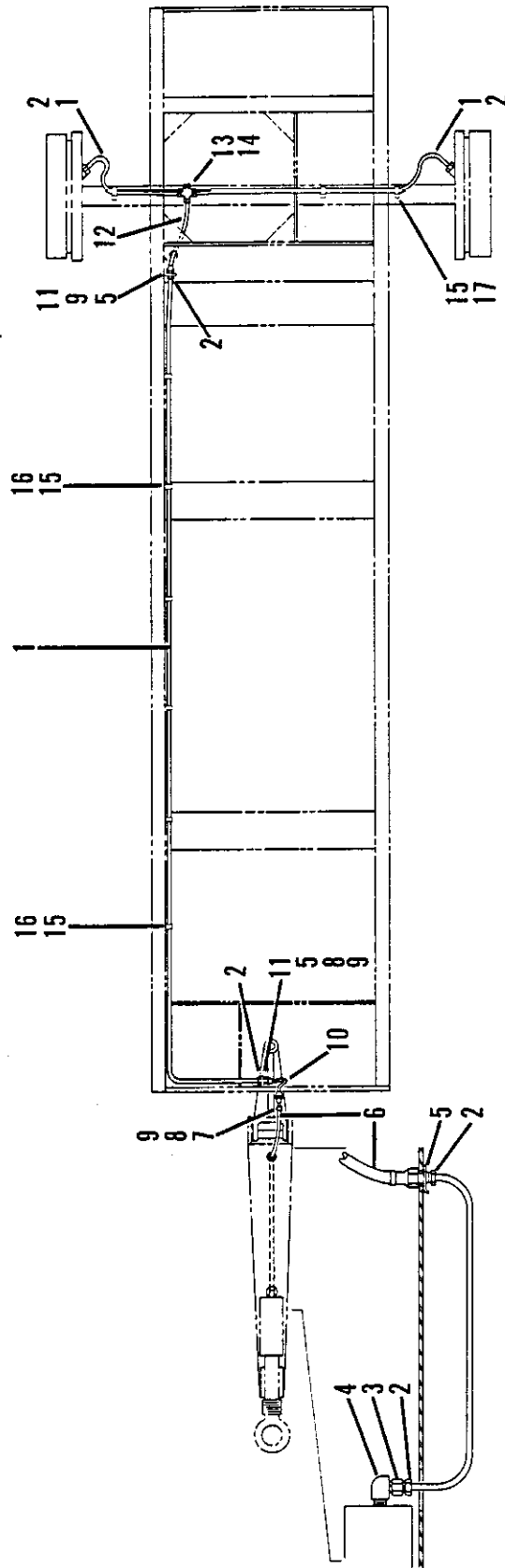


Figure 8-22. Brake lines and fittings

FIG. & INDEX NO.	PART NUMBER	DESCRIPTION							UNITS PER ASSY	USABLE ON CODE
		1	2	3	4	5	6	7		
8-22-	No Number	HYDRAULIC BRAKE LINES AND FITTINGS (See figure 8-1-59 for NHA)							REF	
-1	3-8504	.	TUBING, Steel, 3/16 OD (22938)	25 FT	
-2	5269-2	.	NUT, Tubing (22938)	8	
-3	5274-2	.	CONNECTOR, Male (22938)	1	
-4	82542	.	ELBOW, Tube	1	
-5	5285	.	U-CLAMP (22938)	3	
-6	5287-3	.	HOSE ASSEMBLY (22938)	1	
-7	34937	.	CLIP, Tubing (AP)	1	
-8	9416918	.	NUT, Lock, hex serr flg, 1/4 - 20 NC (AP)	3	
-9	9419376	.	SCREW, Cap, hex serr wash hd, 1/4 - 20 NC x 1 in. lg (AP)	5	
-10	5287-1	.	HOSE ASSEMBLY (22938)	1	
-11	5286	.	BRACKET, Frame (22938)	2	
-12	5287-2	.	HOSE ASSEMBLY (22938)	1	
-13	5268-3	.	TEE, Axle (22938)	1	
-14	9414204	.	SCREW, Cap, hex serr wash hd, 1/4 - 20 NC x 3/8 in. lg (AP)	1	
-15	5263-3	.	CLIP, Tubing (22938)	9	
-16	81947	.	SCREW, Mach, hex hd, no. 10-24 NC x 3/4 in. lg (AP)	6	
-17	443874	.	SCREW, Mach, hex hd, no. 10 - 24 NC x 1/2 in. lg (AP)	3	

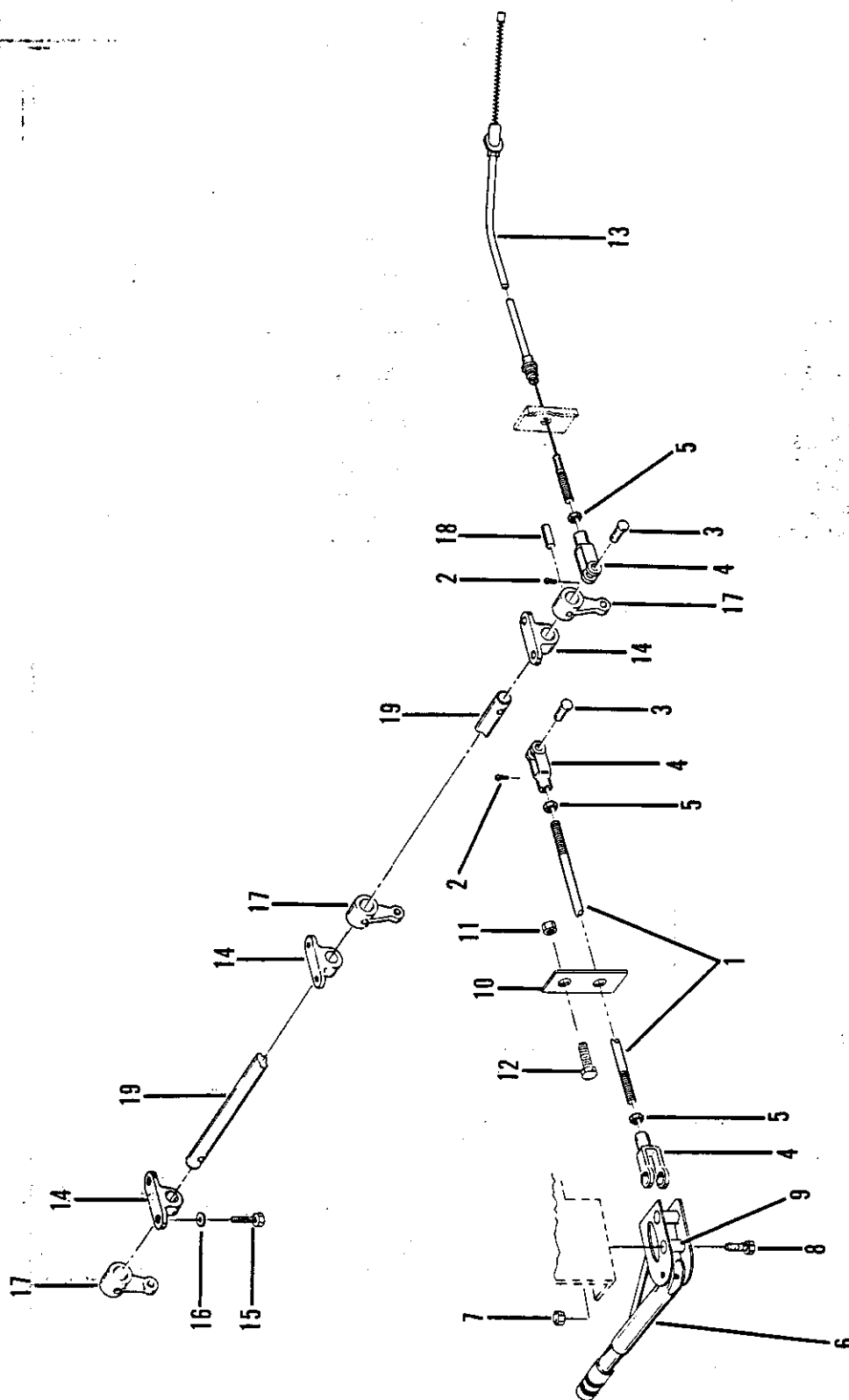


Figure 8-23. Handbrake lever and cross shaft

FIG. & INDEX NO.	PART NUMBER	DESCRIPTION							UNITS PER ASSY	USABLE ON CODE
		1	2	3	4	5	6	7		
8-23-	473-5906	HANDBRAKE LEVER AND CROSS SHAFT							REF	
		(See figure 8-1-60 for NHA) (22938)								
-1	8329-964	.	ROD, Brake (22938)						1	
-2	4800-2	.	PIN, Cotter, 3/32 x 3/4 in. (AP) (22938) ..						3	
-3	5206	.	PIN, Yoke (AP) (22938)						3	
-4	5205	.	YOKE (AP) (22938)						4	
-5	4601-5	.	NUT, Hex, 3/8 - 24NF (AP) (22938)						4	
-6	1-5919	.	LEVER ASSEMBLY, Handbrake (22938)						1	
-7	443335	.	LOCKNUT, Hex, 3/8 - 16 NC (AP)						2	
-8	122188	.	SCREW, Cap, hex hd, 3/8 - 16 NC x 2-1/4 in. lg (AP)						2	
-9	5204	.	SPACER, Lever (22938)						1	
-10	80784	.	BRACKET, Rod support						1	
-11	9416918	.	NUT, Lock, hex serr flg, 1/4 - 20 NC (AP)						1	
-12	9419376	.	SCREW, Cap, hex serr wash hd, 1/4 - 20 NC x 1 in. lg (AP)						1	
-13	1-8318	.	CABLE, Brake (22938)						2	
-14	5908	.	BEARING, Cross shaft (22938)						3	
-15	120233	.	SCREW, Cap, hex hd, 3/8 - 16 x 1 in. lg (AP)						6	
-16	120382	.	WASHER, Lock, split, 3/8 in. (AP)						6	
-17	5909	.	LEVER, Shaft (22938)						3	
-18	5000-2	.	ROLL PIN (AP) (22938)						3	
-19	5910-473	.	CROSS SHAFT (22938)						1	

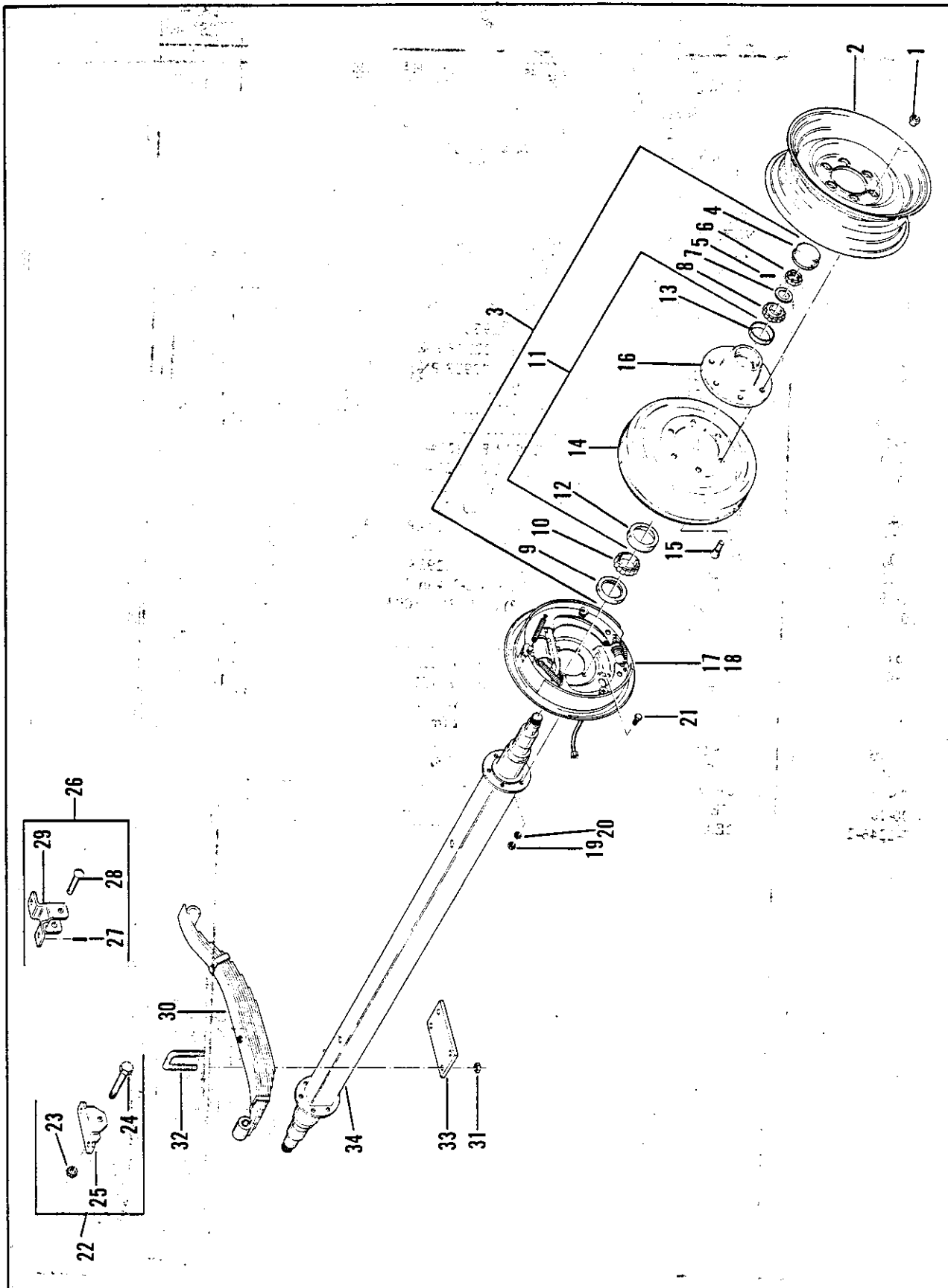


Figure 8-24. Rear axle assembly

FIG. & INDEX NO.	PART NUMBER	DESCRIPTION	UNITS PER ASSY	USABLE ON CODE
		1 2 3 4 5 6 7		
8-24	473-2246	REAR AXLE ASSEMBLY (See figure 8-1-61 for NHA) (22938)	REF	
-1	4603-1	NUT, Wheel, cone face (22938)	12	
		(component of hub and drum assembly 11-3612, index 3 below)		
-2	91905	WHEEL (34281) (16004 PN 81240)	2	
-3	VS-902A	STEM, Valve, wheel (17875) (16004 PN 83147)	4	
-3	11-3612	HUB AND DRUM ASSY (22938)	2	
-4	6312	CAP, Grease (22938)	1	
-5	4800-5	PIN, Cotter, spindle, 1/8 x 2 in. (AP) (22938)	2	
-6	4600-2	NUT, Spindle, sltd hex, 1-14 NF (AP) (22938)	2	
-7	4702-2	WASHER, Spindle, tongue, 1 in. (AP) (22938)	2	
-8	15123	CONE, Bearing, outer (60038) (22938 PN 6058)	1	
-9	6311	SEAL, Grease (22938)	1	
-10	24780	CONE, Bearing, inner (60038) (22938 PN 6057)	1	
-11	10-3612	HUB AND DRUM SUBASSY (22938)	1	
-12	24720	CUP, Bearing, inner (60038) (22938 PN 6152)	1	
-13	15245	CUP, Bearing, outer (60038) (22938 PN 6151)	1	
-14	8206	DRUM, Brake (22938)	1	
-15	6251-10	STUD, Wheel (22938)	6	
-16	3603-2	HUB, Wheel (22938)	1	
-17	3201919	BRAKE ASSY, LH (14892) (22938 PN 8214-7) (see figure 8-25)	1	
-18	3201920	BRAKE ASSY, RH (14892) (22938 PN 8214-8) (see figure 8-25)	1	
-19	4601-5	NUT, Hex, 3/8 - 24 NF (AP) (22938)	10	
-20	4700-4	WASHER, Lock, split, 3/8 in. (AP) (22938)	10	
-21	4901-7	SCREW, Cap, hex hd, 3/8 - 24 NF x 1 in. lg (AP) (22938)	10	
-22	1-4250	BRACKET ASSY, Spring, front (22938)	2	
-23	4601-33	LOCKNUT, Hex, 9/16 - 12 NC (AP) (22938)	1	
-24	4901-19	SCREW, Cap, hex, 9/16 - 12 NC x 3-3/4 in. lg (AP) (22938)	1	
-25	4250	BRACKET, Spring, front (AP) (22938) (16004 PN 27797, welded to unit frame)	1	
-26	1-4251	BRACKET ASSY, Spring, rear (22938)	2	
-27	4800-3	PIN, Cotter, 1/8 x 1 in. (AP) (22938)	1	
-28	5403-1	RIVET, Rd hd, 9/16 dia x 3 in. lg (AP) (22938)	1	
-29	4251	BRACKET, Spring, rear (AP) (22938)	1	
		(16004 PN 27798, welded to unit frame)		
-30	1-4010-5	SPRING (22938)	2	
-31	4601-7	LOCKNUT, Hex, 1/2 - 20 NF (AP) (22938)	8	
-32	5100-10	U-BOLT, Spring (AP) (22938)	4	
-33	5600-20	TIE PLATE, Spring (AP) (22938)	2	
-34	473-2246-2	BEAM ASSY, Axle (22938)	1	

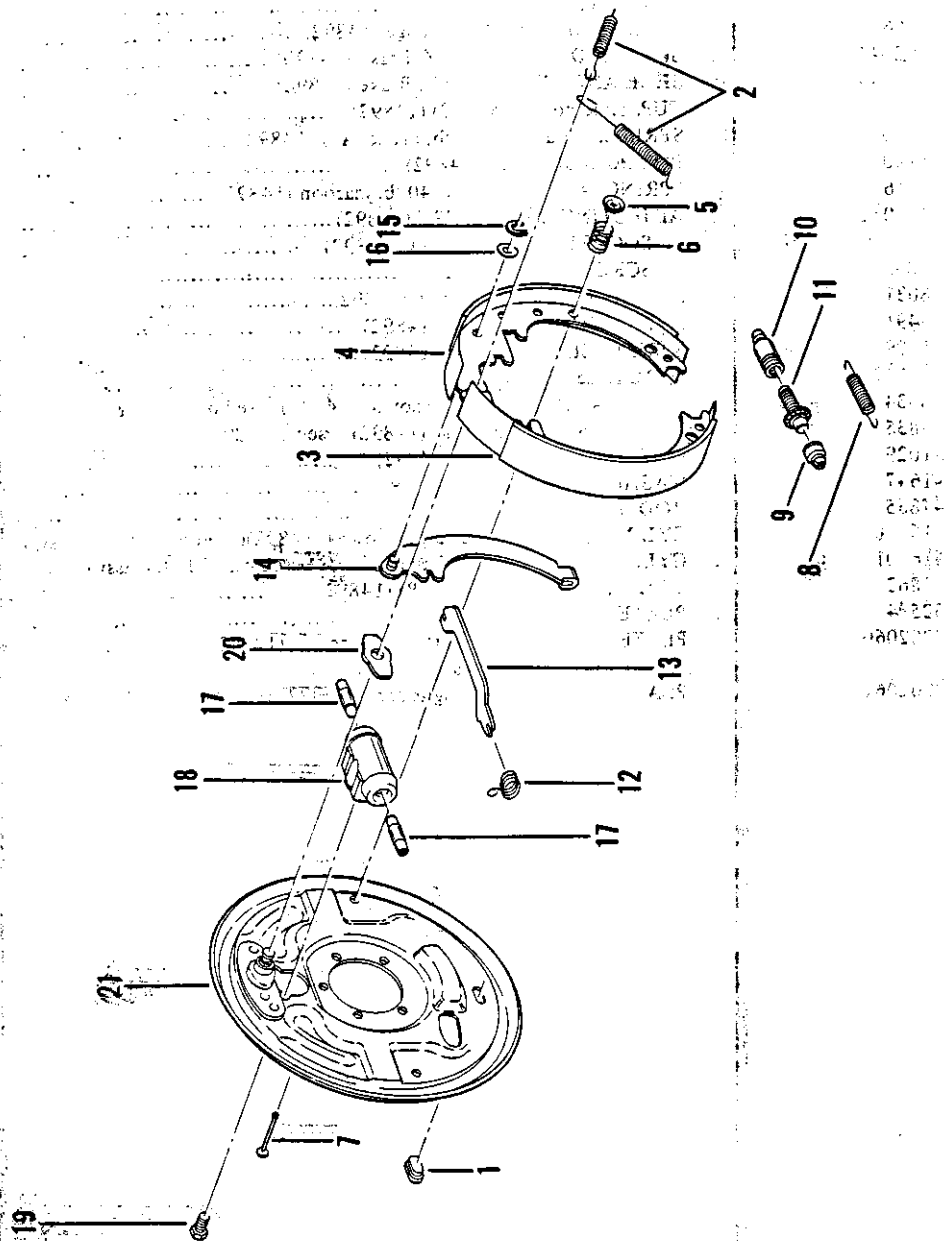


Figure 8-25. Brake assembly

FIG. & INDEX NO.	PART NUMBER	DESCRIPTION							UNITS PER ASSY	USABLE ON CODE
		1	2	3	4	5	6	7		
8-25-	3201919	BRAKE ASSEMBLY, LH (14892) (22938 PN 8214-7).....							REF	
		(see figure 8-24-17 for NHA) (LH shown)								
	3202020	BRAKE ASSEMBLY, RH (14892) (22938 PN 8214-8).....							REF	
		(see figure 8-24-18 for NHA) (RH opposite to that shown)								
-1	301055	GROMMET (14892)							1	
-2	33786	SPRING, Anchor, 63 lb, orange (14892)							2	
-3	3202045	SHOE AND LINING ASSY, Brake (14892)							1	
-4	3202049	SHOE AND LINING ASSY, Brake (14892)							1	
-5	23969	CUP, Shoe, holddown (AP) (14892)							4	
-6	23960	SPRING, Holddown, 24 lb, black (AP) (14892)							2	
-7	26320	PIN, Holddown (AP) (14892)							2	
-8	29716	SPRING, Adjusting screw, 40 lb, maroon (14892)							1	
	3202052	ADJUSTING SCREW ASSY (14892)							1	
-9	48032	SOCKET, Adjusting screw (14892)							1	
	302058	SCREW ASSY (14892)							1	
-10	48031	NUT, Adjusting screw (14892)							1	
-11	29491	SCREW, Adjusting (14892)							1	
-12	41199	SPRING, Strut, 9 lb, blue (14892)							1	
-13	302143	STRUT, Lever (14892)							1	
-14	48834	LEVER ASSY, Left hand (shown) (14892) (used on 3201919 assy)							1	
	48835	LEVER ASSY, Right hand (14892) (used on 3201920 assy)							1	
-15	41029	RETAINER, Lever (AP) (14892)							1	
-16	41647	WASHER, Retainer (AP) (14892)							1	
-17	47865	ROD, Push, cylinder (14892)							2	
-18	616200	CYLINDER, Brake, left hand (shown) (14892) (used on 3201919 assy)							1	
	616201	CYLINDER, Brake, right hand (14892) (used on 3201920 assy)							1	
-19	47862	SCREW, Cap, and washer (AP) (14892)							2	
-20	32594	PLATE, Guide (14892)							1	
-21	3202060	PLATE ASSY, Backing, left hand (shown) (14892)							1	
		(used on 3201919 assy)								
	3202061	PLATE ASSY, Backing, right hand (14892) (used on 3201920 assy)							1	

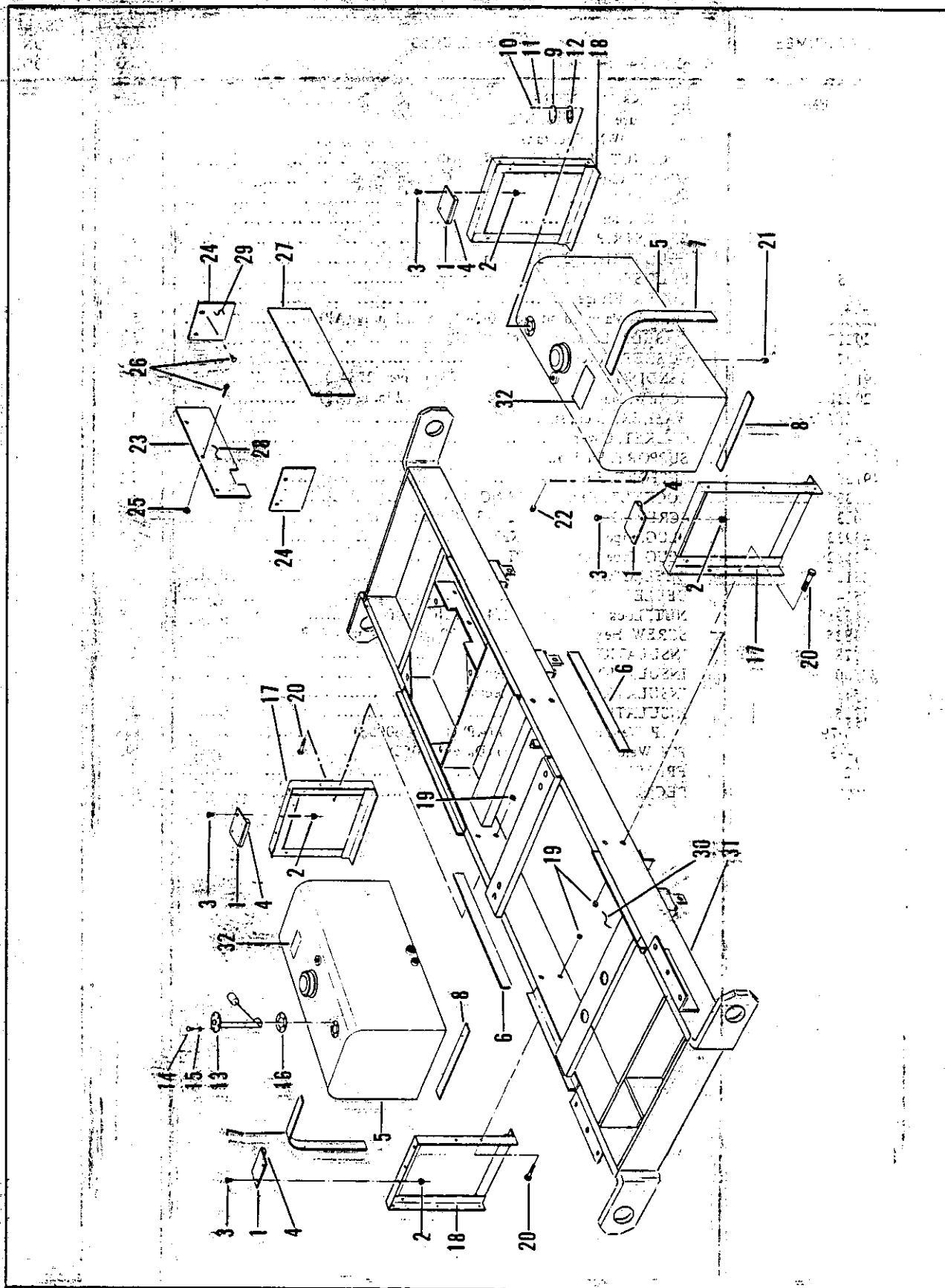


Figure 8-26. Fuel tank mounting and frame group

FIG. & INDEX NO.	PART NUMBER	DESCRIPTION	UNITS PER ASSY.	USABLE ON CODE
8-26-	No Number	FUEL TANK MOUNTING AND FRAME GROUP	REF	
		(See figure 8-1-62 for NHA)		
-1	49771	HOLDDOWN, Fuel tank	4	
-2	443333	LOCKNUT, Hex, 5/16 - 18 NC (AP)	8	
-3	122017	SCREW, Cap, hex hd, 5/16 - 18 NC x 1 in. lg (AP)	8	
-4	82639	FELT STRIP, Fuel tank, 3/8 x 2 x 5 in. lg	8	
-5	40862	TANK, Fuel	2	
-6	27933	FELT STRIP, 1/2 x 2 x 33 in. lg	4	
-7	27934	FELT STRIP, 1/2 x 2 x 29 in. lg	4	
-8	27935	FELT STRIP, 1/2 x 2 x 18 in. lg	4	
-9	44741	COVER, Flange	1	
-10	120221	SCREW, Mach, rd hd, no. 10-24 NC x 1/2 in. lg (AP)	5	
-11	120217	WASHER, Lock, split, no. 10 (AP)	5	
-12	44427	GASKET, Cover	1	
-13	391C	SENDING UNIT, Fuel level (57733) (Davey 27843)	1	
-14	120221	SCREW, Mach, rd hd, no. 10-24 NC x 1/2 in. lg (AP)	5	
-15	120217	WASHER, Lock, split, no. 10 (AP)	5	
-16	44427	GASKET, Cover	1	
-17	49158	SUPPORT, Fuel tank	2	
-18	49159	SUPPORT, Fuel tank	2	
-19	443339	LOCKNUT, Hex, 1/2 - 13 NC (AP)	8	
-20	120237	SCREW, Cap, hex hd, 1/2 - 13 NC x 3 in. lg (AP)	8	
-21	143933	PLUG, Pipe, sq hd, 1/4 NPT	2	
-22	143162	PLUG, Pipe, sch, 3/8 NPT	1	
-23	82513	DEFLECTOR, Sound	1	
-24	82514	DEFLECTOR, Sound	2	
-25	9416918	NUT, Lock, hex serr flg, 1/4 - 20 NC (AP)	5	
-26	274825	SCREW, Hex serr wash hd, 1/4 - 20 NC x 3/4 in. lg (AP)	7	
-27	82578	INSULATION, Baffle box	1	
-28	82560	INSULATION, Sound deflector	1	
-29	82561	INSULATION, Sound deflector	2	
-30	82555	INSULATION, Floor	1	
	009-479	CLIP, Welding pin (84483) (AP) (Davey 80053)	45	
	009-131	PIN, Welding (84483) (AP) (Davey 80052)	45	
-31	80320	FRAME, Unit	1	
-32	62108	DECAL, Diesel fuel only	2	

